

2525C Lebanon Pike

Nashville, TN 37214

FOR LEASE

1,850 up to 4,737 ± Square Feet Available
(Divisible)

**NEW
PRICING**



- Completely Renovated Office / Retail
- 1,850± sqft up to 4,737 ± sqft Spaces
- 70 ± Spaces Available
- Multiple Office/ Retail Combinations
- Spec Suites Available for Viewing
- Private Offices/ Open Work Areas

\$15-\$17 PSF - Full Service

- Great location on Lebanon Pike
- Shared common areas on both floors
- Common areas include kitchen, break room, and bathrooms
- Newly Paved Parking Lot
- Walkable to various restaurants, coffee shops, and more!



Laura Grider, Broker

OFFICE 615.256.7114 | FAX 615.256.7181 | 3030 SIDCO DRIVE, NASHVILLE, TN 37204

INFORMATION CONTAINED HEREIN HAS BEEN OBTAINED FROM THE OWNER OF THE PROPERTY OR FROM OTHER SOURCES WE DEEM RELIABLE. ALL INFORMATION SHOULD BE VERIFIED PRIOR TO PURCHASE OR LEASE.

2525C Lebanon Pike

Nashville, TN 37214

FOR LEASE



Close Proximity to:

- Caliber Coffee - 2 minute walk
- Shipleys Do-Nuts - 3 minute walk
- Sunflower Bakehouse - 5 minute walk
- TennFold Brewing - 6 minute walk
- Nectar Urban Cantina - 5 minute walk
- Whitt's BBQ - 6 minute walk
- Party Fowl - 8 minute walk
- and more!

Laura Grider, Broker

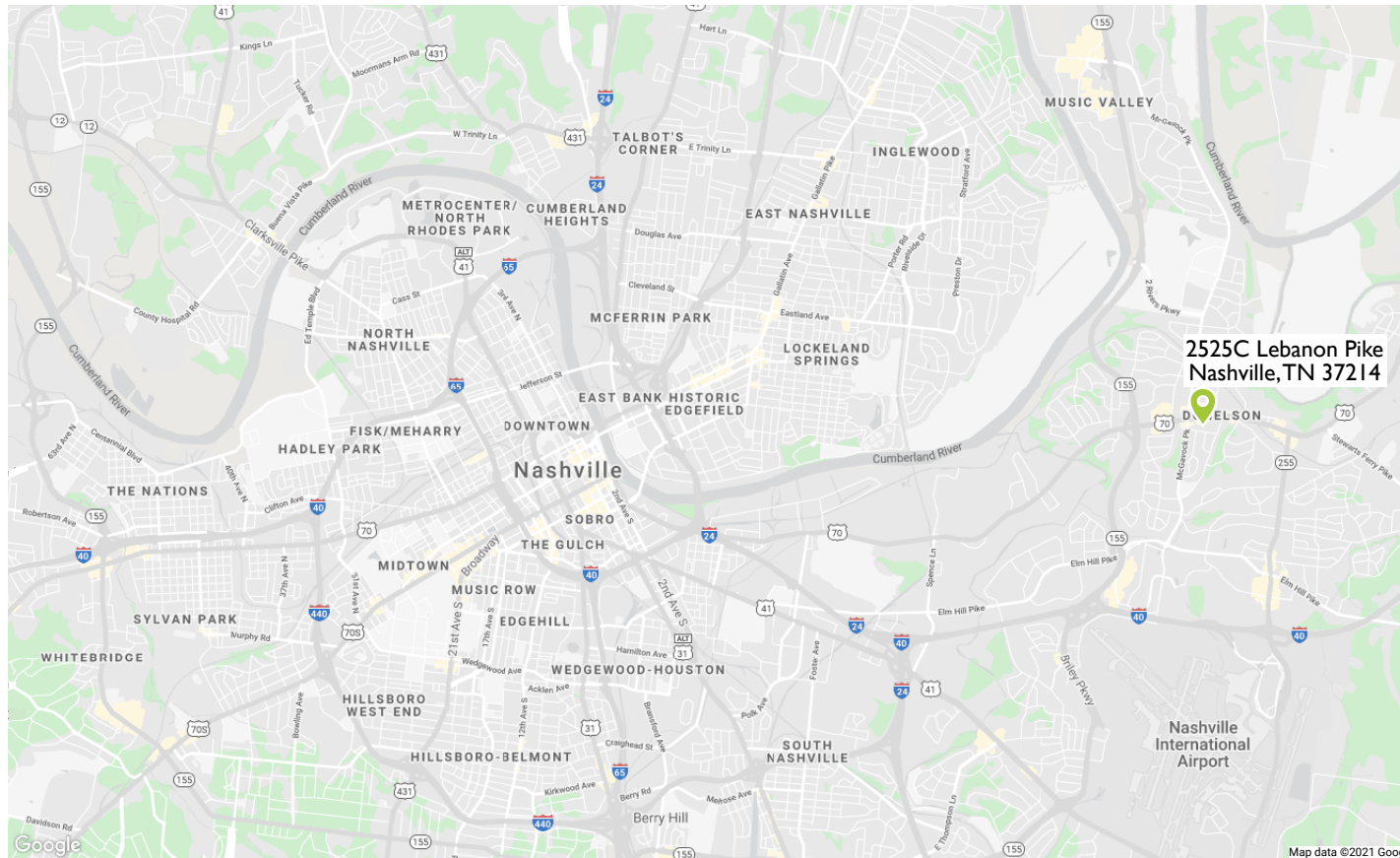
OFFICE 615.256.7114 | FAX 615.256.7181 | 3030 SIDCO DRIVE, NASHVILLE, TN 37204

INFORMATION CONTAINED HEREIN HAS BEEN OBTAINED FROM THE OWNER OF THE PROPERTY OR FROM OTHER SOURCES WE DEEM RELIABLE. ALL INFORMATION SHOULD BE VERIFIED PRIOR TO PURCHASE OR LEASE.

2525C Lebanon Pike

Nashville, TN 37214

FOR LEASE



- 6.3 miles to Broadway - 17 minutes
- Great Location with easy access to Briley Parkway/ I-40
- Centrally Located on Lebanon Pike

Average Daily Traffic Volume

Updated August, 2018 • via mobile, GPS, vehicle, and DOT data

Powered by INRIX



US 70

WESTBOUND

Pin on Map

AADT
16,603
Vehicles

AVG Hourly Traff.
692
Vehicles



Updated 2018 • via mobile, GPS, vehicle, and DOT data • Powered by INRIX

Laura Grider, Broker

OFFICE 615.256.7114 | FAX 615.256.7181 | 3030 SIDCO DRIVE, NASHVILLE, TN 37204

INFORMATION CONTAINED HEREIN HAS BEEN OBTAINED FROM THE OWNER OF THE PROPERTY OR FROM OTHER SOURCES WE DEEM RELIABLE. ALL INFORMATION SHOULD BE VERIFIED PRIOR TO PURCHASE OR LEASE.

2525C Lebanon Pike

Nashville, TN 37214

FOR LEASE



Laura Grider, Broker

OFFICE 615.256.7114 | FAX 615.256.7181 | 3030 SIDCO DRIVE, NASHVILLE, TN 37204

INFORMATION CONTAINED HEREIN HAS BEEN OBTAINED FROM THE OWNER OF THE PROPERTY OR FROM OTHER SOURCES WE DEEM RELIABLE. ALL INFORMATION SHOULD BE VERIFIED PRIOR TO PURCHASE OR LEASE.

2525C Lebanon Pike

Nashville, TN 37214

FOR LEASE



Laura Grider, Broker

OFFICE 615.256.7114 | FAX 615.256.7181 | 3030 SIDCO DRIVE, NASHVILLE, TN 37204

INFORMATION CONTAINED HEREIN HAS BEEN OBTAINED FROM THE OWNER OF THE PROPERTY OR FROM OTHER SOURCES WE DEEM RELIABLE. ALL INFORMATION SHOULD BE VERIFIED PRIOR TO PURCHASE OR LEASE.

2525C Lebanon Pike
Nashville, TN 37214

FOR LEASE



Suite 104



Suite 104



Suite 204



Suite 206

Laura Grider, Broker

OFFICE 615.256.7114 | FAX 615.256.7181 | 3030 SIDCO DRIVE, NASHVILLE, TN 37204

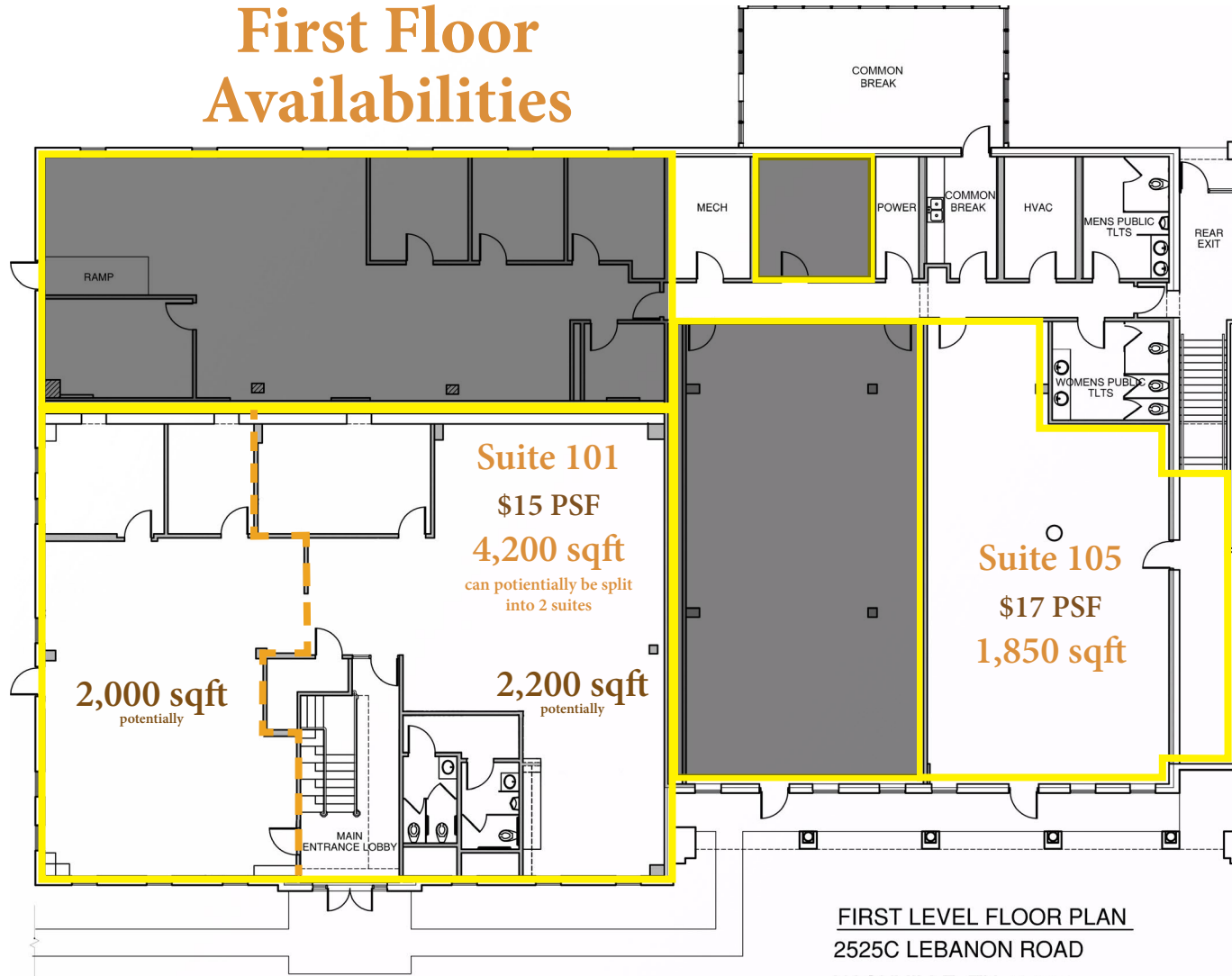
INFORMATION CONTAINED HEREIN HAS BEEN OBTAINED FROM THE OWNER OF THE PROPERTY OR FROM OTHER SOURCES WE DEEM RELIABLE. ALL INFORMATION SHOULD BE VERIFIED PRIOR TO PURCHASE OR LEASE.

2525C Lebanon Pike

Nashville, TN 37214

FOR LEASE

First Floor Availabilities



FIRST LEVEL FLOOR PLAN
2525C LEBANON ROAD
NASHVILLE, TN 37214

Laura Grider, Broker

OFFICE 615.256.7114 | FAX 615.256.7181 | 3030 SIDCO DRIVE, NASHVILLE, TN 37204

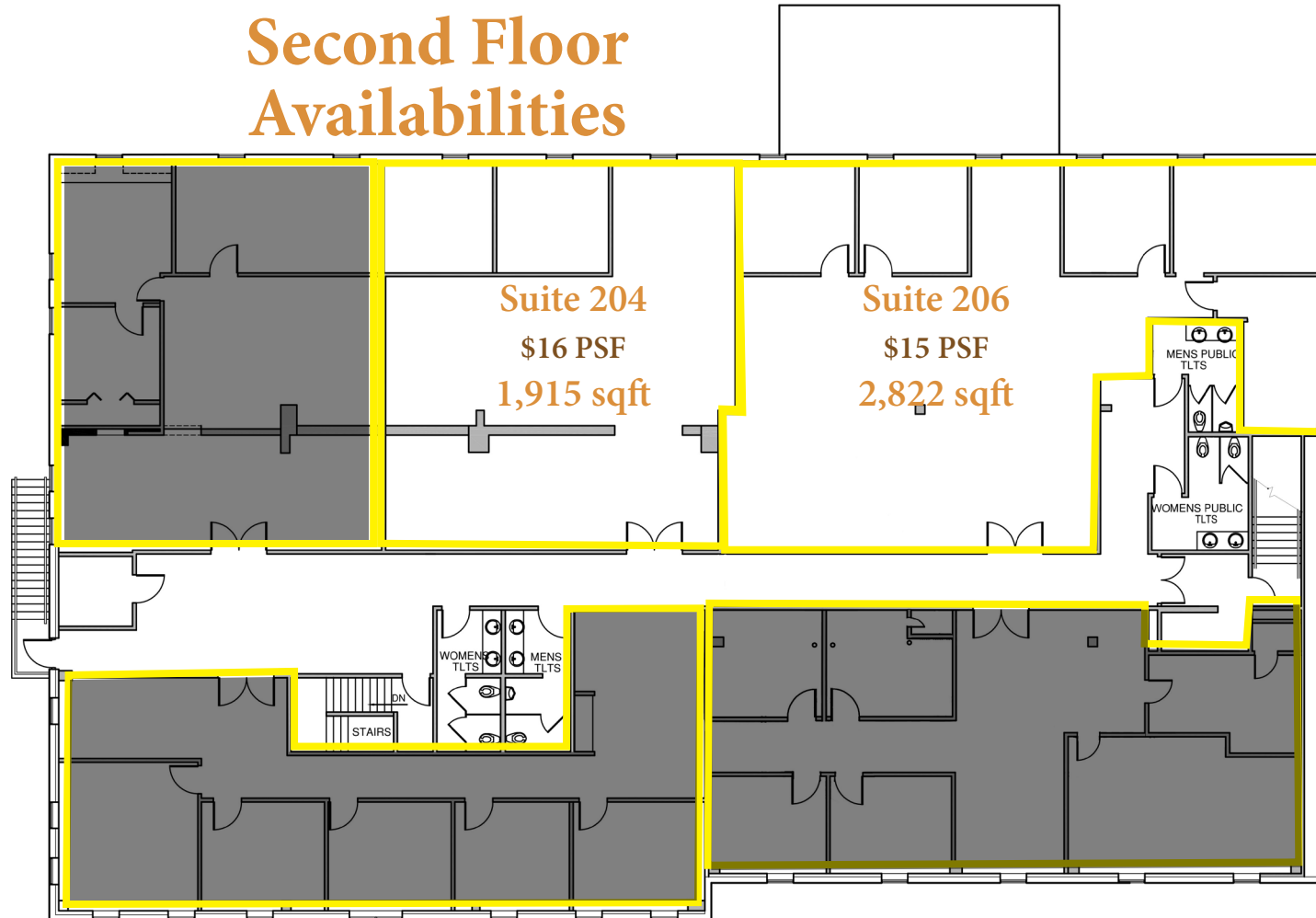
INFORMATION CONTAINED HEREIN HAS BEEN OBTAINED FROM THE OWNER OF THE PROPERTY OR FROM OTHER SOURCES WE DEEM RELIABLE. ALL INFORMATION SHOULD BE VERIFIED PRIOR TO PURCHASE OR LEASE.

2525C Lebanon Pike

Nashville, TN 37214

FOR LEASE

Second Floor Availabilities



SECOND LEVEL FLOOR PLAN

Laura Grider, Broker

OFFICE 615.256.7114 | FAX 615.256.7181 | 3030 SIDCO DRIVE, NASHVILLE, TN 37204

INFORMATION CONTAINED HEREIN HAS BEEN OBTAINED FROM THE OWNER OF THE PROPERTY OR FROM OTHER SOURCES WE DEEM RELIABLE. ALL INFORMATION SHOULD BE VERIFIED PRIOR TO PURCHASE OR LEASE.