

FOR LEASE | THREE INDUSTRIAL BUILDINGS | ZONING CS

**0 & 103 | 108 | 115
W WEBSTER ST**



A portion of this property is located within the Flood Plain described by FEMA



Property Highlights



ADDRESS	0 & 103 W Webster St., Madison, TN 37115
PRICE	\$5,500 / Month NNN
OPEX	\$____ PSF
AVAILABLE	1± Acres
HIGHLIGHTS	Zoned CS - Commercial Services Outside Storage Use Pad in Place

A portion of this property is located within the Flood Plain described by FEMA



Property Highlights



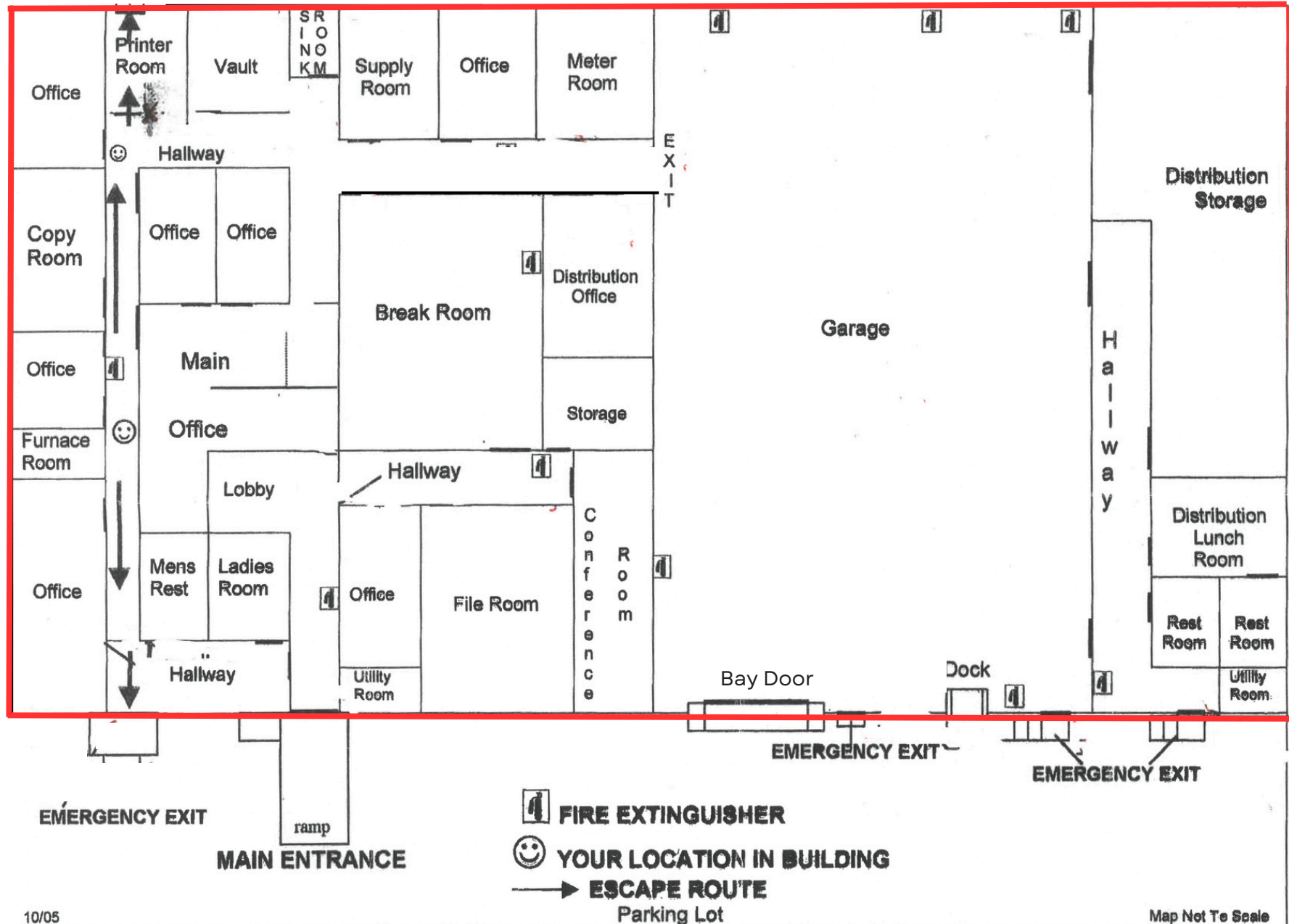
ADDRESS	108 W Webster St., Madison, TN 37115
PRICE	\$13.00 PSF NNN
OPEX	\$1.79 PSF
AVAILABLE	2,000± SF Up To 19,320± SF
HIGHLIGHTS	(1) 13' x 16' Automatic Drive-In Door (1) 12' x 16' Dock Door (1) 12' x 12' Modified Dock Door 10,000± SF Warehouse 9,320± SF Office 14' Clear Height Not in Floodplain Zoned CS - Commercial Services



Floor Plan | 108 W Webster Street

MAP NOT TO SCALE

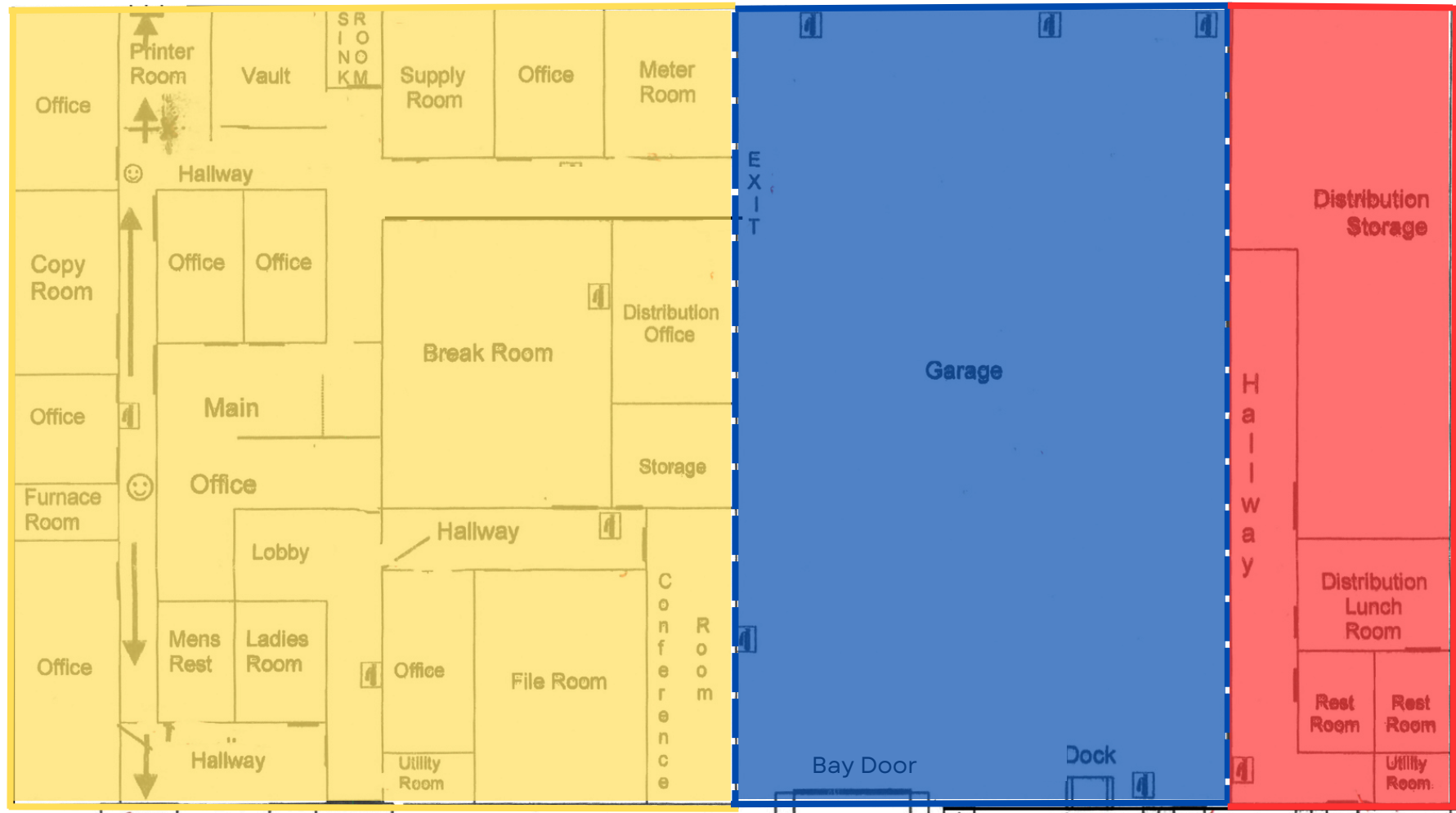
19,320± SF



10/05

Floor Plan | 108 W Webster Street

MAP NOT TO SCALE



A
7,320± SF
OFFICE USE

B
10,000± SF
RETAIL / OFFICE
USE

C
2,000± SF
RETAIL /
OFFICE USE

Property Highlights



ADDRESS 115 W Webster St., Madison, TN 37115

PRICE \$12.00 | NNN

OPEX \$3.07 PSF

AVAILABLE 5,400± & 5,856± SF | Total: 11,256± SF

HIGHLIGHTS (1) 12' x 14' Automatic Drive-In Door

(1) 10' x 12' Automatic Drive-In Door

(1) 8' x 8' Drive-In Door

Skylights & LED Lighting

Gas Heat & Exhaust Fan

3-Phase Electrical

Outside Fenced Storage Available

Zoned CS - Commercial Services



Ample Fenced Parking



Clear Span in Half of Building

A portion of this property is located within the Flood Plain described by FEMA





Contact

Laura Grider

615-604-7425

lgrider@horrellcompany.com



615-256-7114

www.horrellcompany.com

3030 Sidco Drive

Nashville, TN 37204

