

1020 Slaters Creek Rd  
Goodlettsville, TN 37072

**FOR LEASE**



**1,740 ± Square Feet  
Available**

**UNIT 2 - STORAGE SPACE**



**Located in Goodlettsville**

Flourescent Lighting

Suspended Gas Heat

Clear Height ± 15

240 AMP Single Phase

\$12.00 PSF MG

(2) 12'x14' Grade Level Doors/Drive In

Laura Grider, Broker

Office 615.256.7114 | Fax 615.256.7181 | 3030 Sidco Drive, Nashville, TN 37204

Information contained herein has been obtained from the owner of the property or from other sources we deem reliable. All information should be verified prior to purchase or lease.

# 1020 Slaters Creek Rd

Goodlettsville, TN 37072

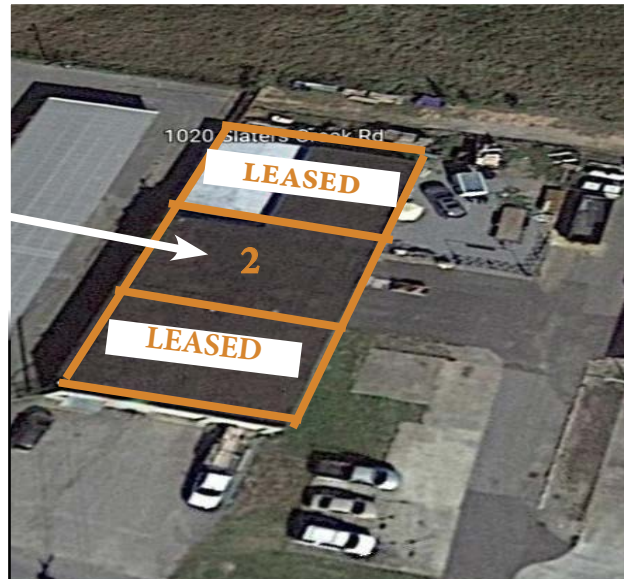
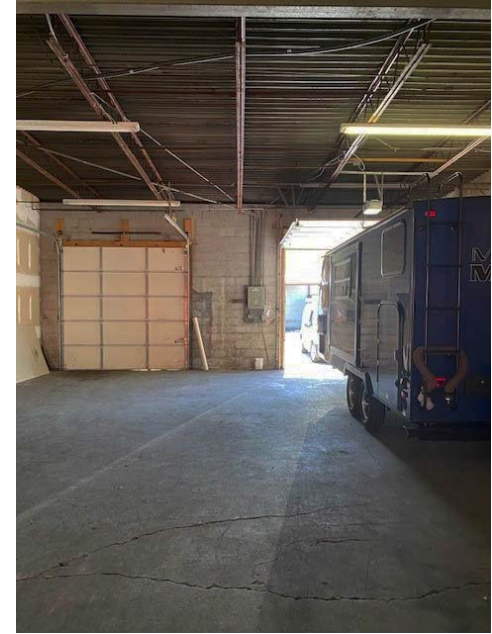
# FOR LEASE



## Unit 2

1,740 ± SF

(1) 12' x 14' Drive In Door  
Storage Space



Laura Grider, Broker

Office 615.256.7114 | Fax 615.256.7181 | 3030 Sidco Drive, Nashville, TN 37204

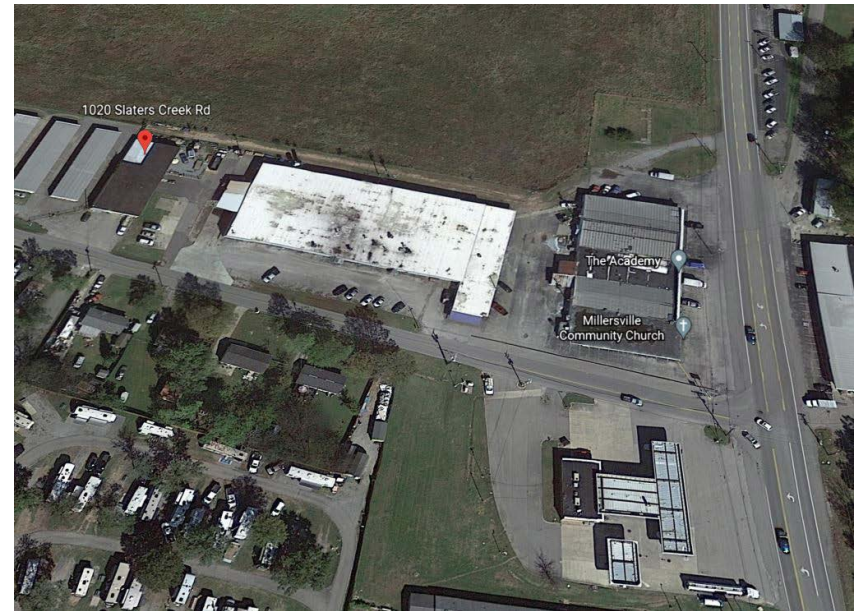
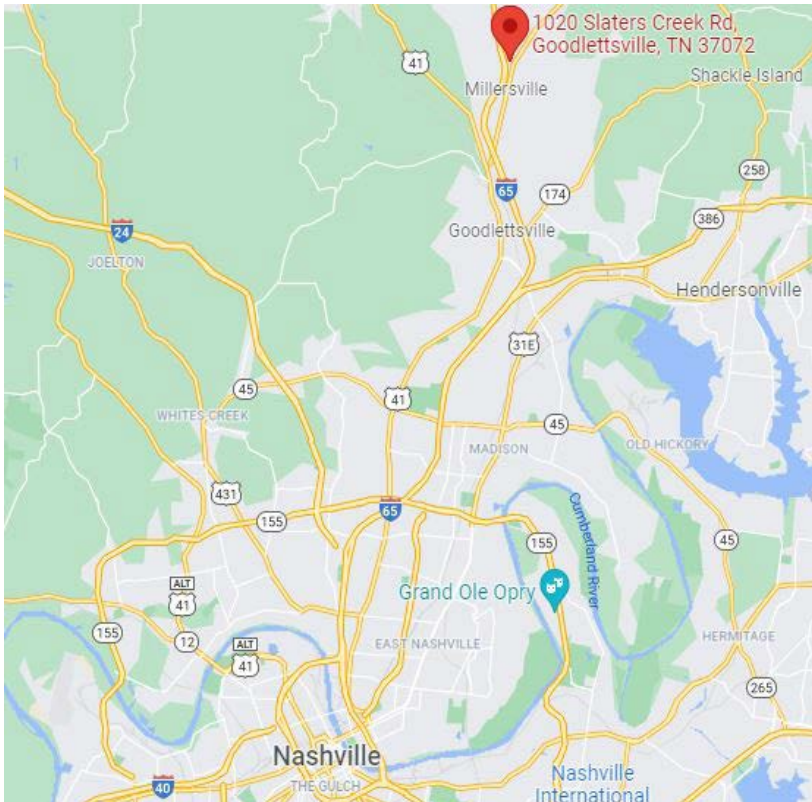
Information contained herein has been obtained from the owner of the property or from other sources we deem reliable. All information should be verified prior to purchase or lease.



# 1020 Slaters Creek Rd

Goodlettsville, TN 37072

# FOR LEASE



Laura Grider, Broker

Office 615.256.7114 | Fax 615.256.7181 | 3030 Sidco Drive, Nashville, TN 37204

Information contained herein has been obtained from the owner of the property or from other sources we deem reliable. All information should be verified prior to purchase or lease.