

1100-1102 Kermit Drive

For Lease
Office Space

A tall, modern office building with a dark, grid-like facade of windows. It is surrounded by green trees and a low hedge in the foreground.

The Oaks Tower

A two-story office building with a dark frame and large glass windows. It has a flat roof and is surrounded by greenery and parked cars.

Garden North

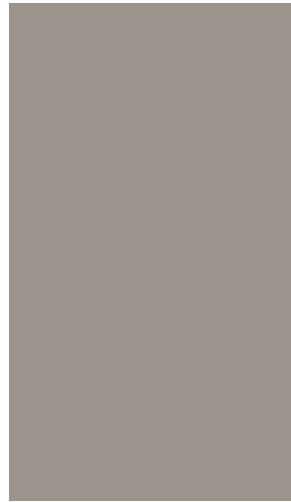
A two-story office building with a dark frame and large glass windows, similar to Garden North. It has a flat roof and is surrounded by greenery and parked cars.

Garden South



Property Overview

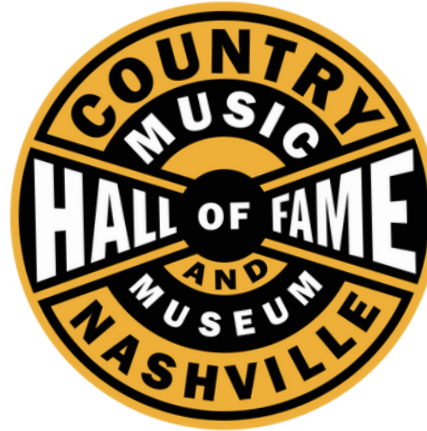
ADDRESS	1100-1102 Kermit Drive Nashville, TN
SIZE	118,240 \pm SF
PRICE	\$16.00 - \$17.50 PSF
AVAILABLE	1,107 \pm up to 16,627 \pm SF
HIGHLIGHTS	Renovated Office Spaces Conference Rooms Available Outdoor Picnic Area 4.5 per 1,000 SF Parking Ratio Turn-Key Build Out Available

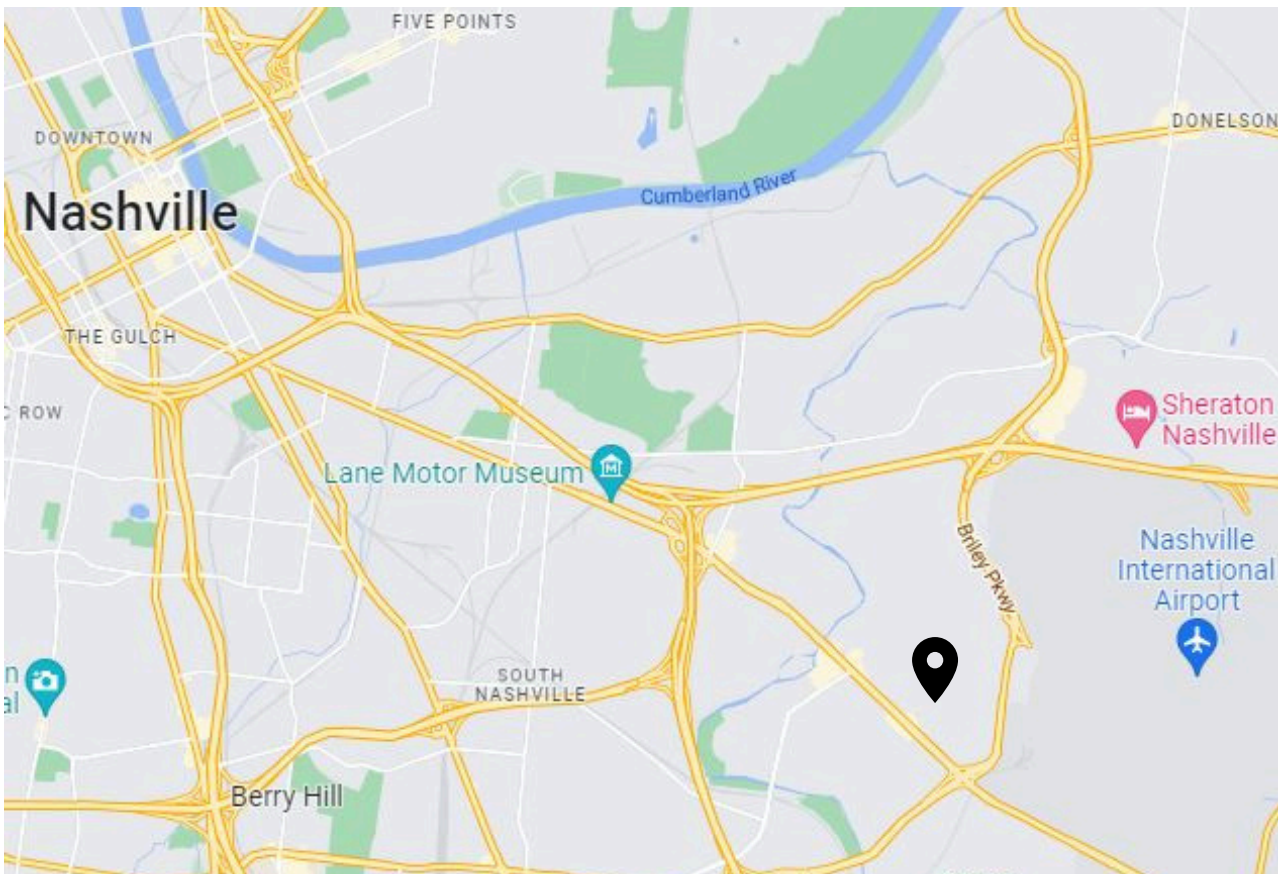


FOR LEASE



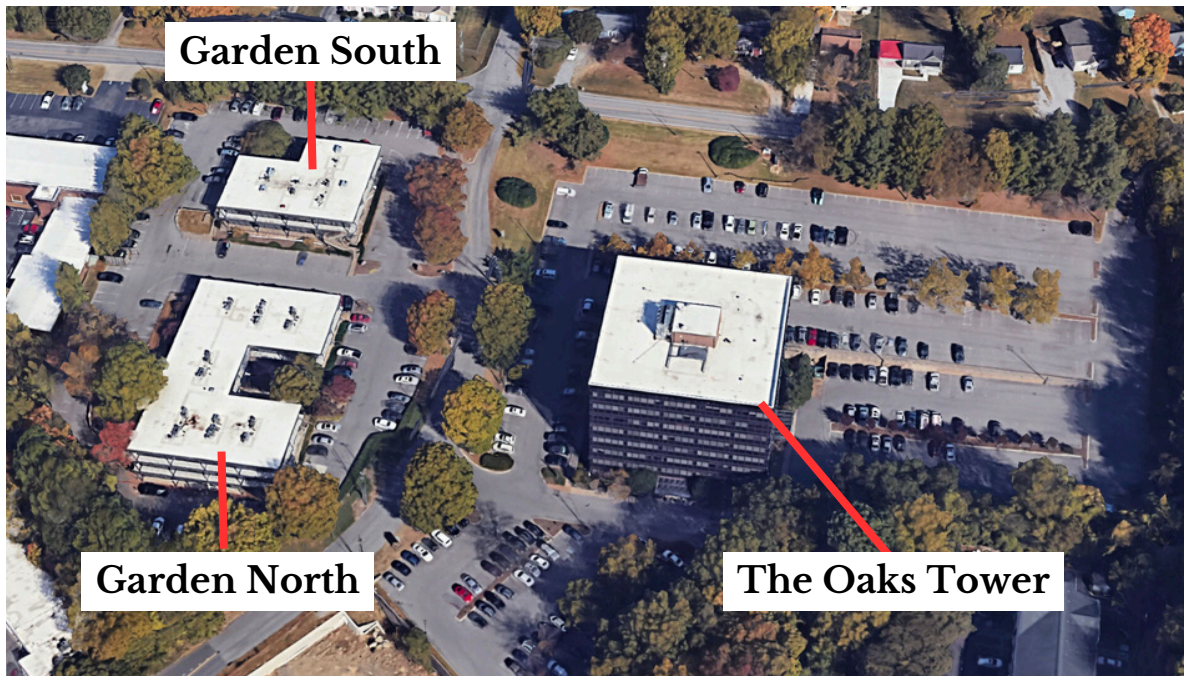
Conveniently Located Within 15 Minutes:





Located Near:

- Nashville International Airport
- I-10
- I-65
- I-24
- I-440
- Briley Parkway

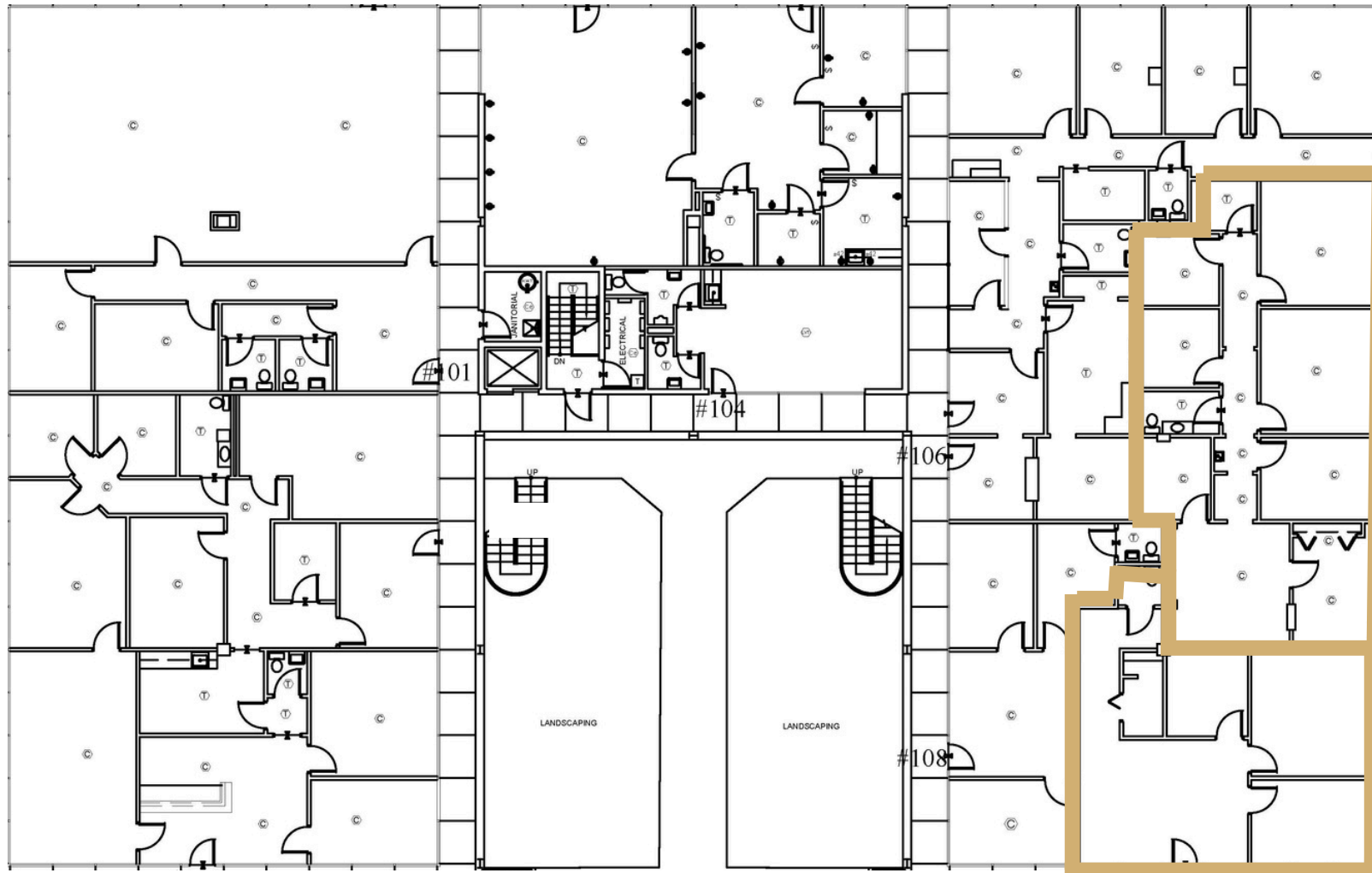


Up To 2,787 \pm SF Available

The Garden South

Suite 105 & 109 | Office

Available: Now



Suite 105
1,680 \pm SF

Suite 109
1,107 \pm SF

This information contained herein has been obtained from sources deemed to be reliable but is provided for demonstrative purposes only. This information is provided without any guarantee, its accuracy and reliability should be verified by interested parties, and it is subject to change without notice or obligation. Horrell Company assumes no responsibility for the accuracy or reliability of the information herein.

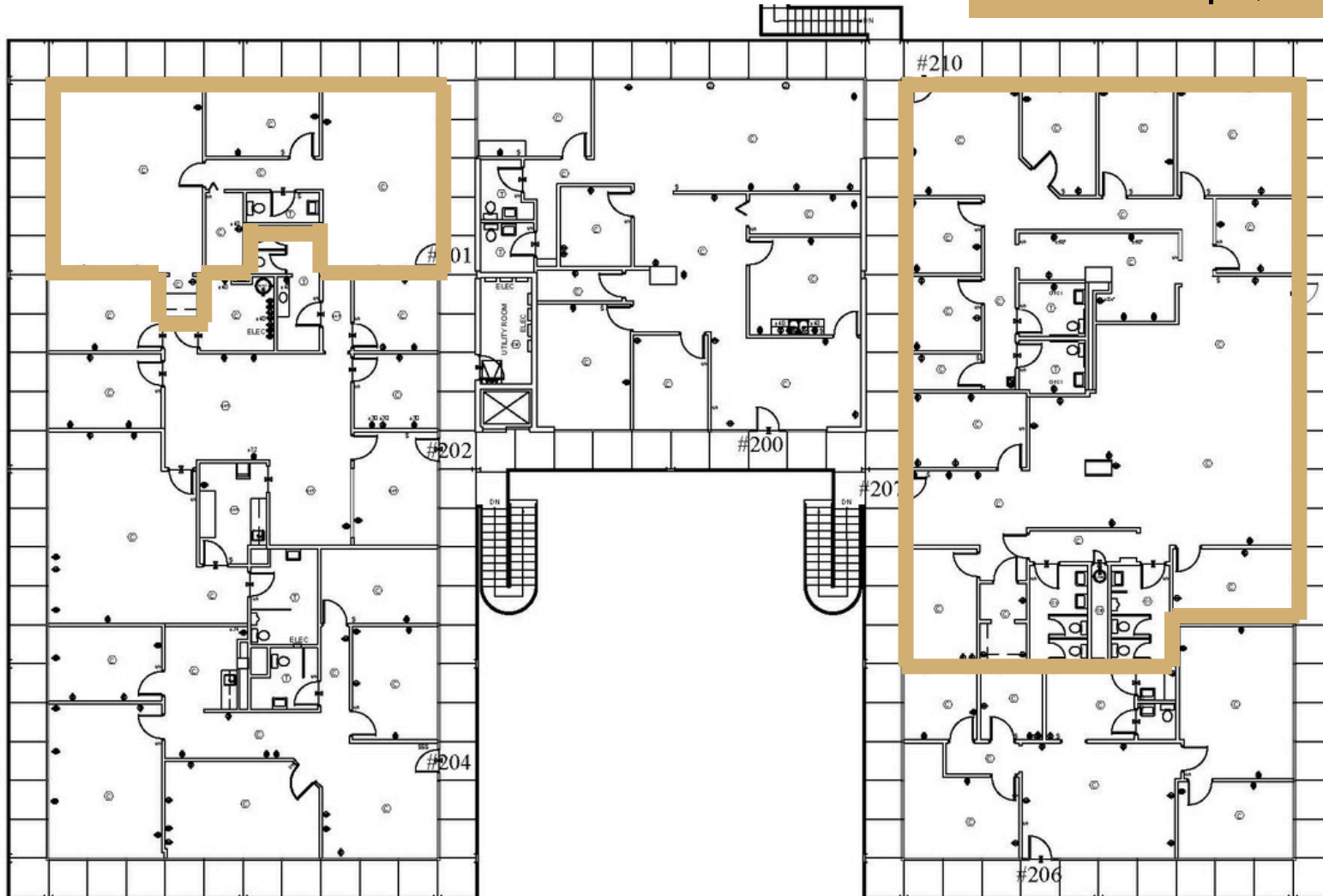


The Garden South

Suite 201 & 207 | Office

Suite 201 | 1,413 \pm SF

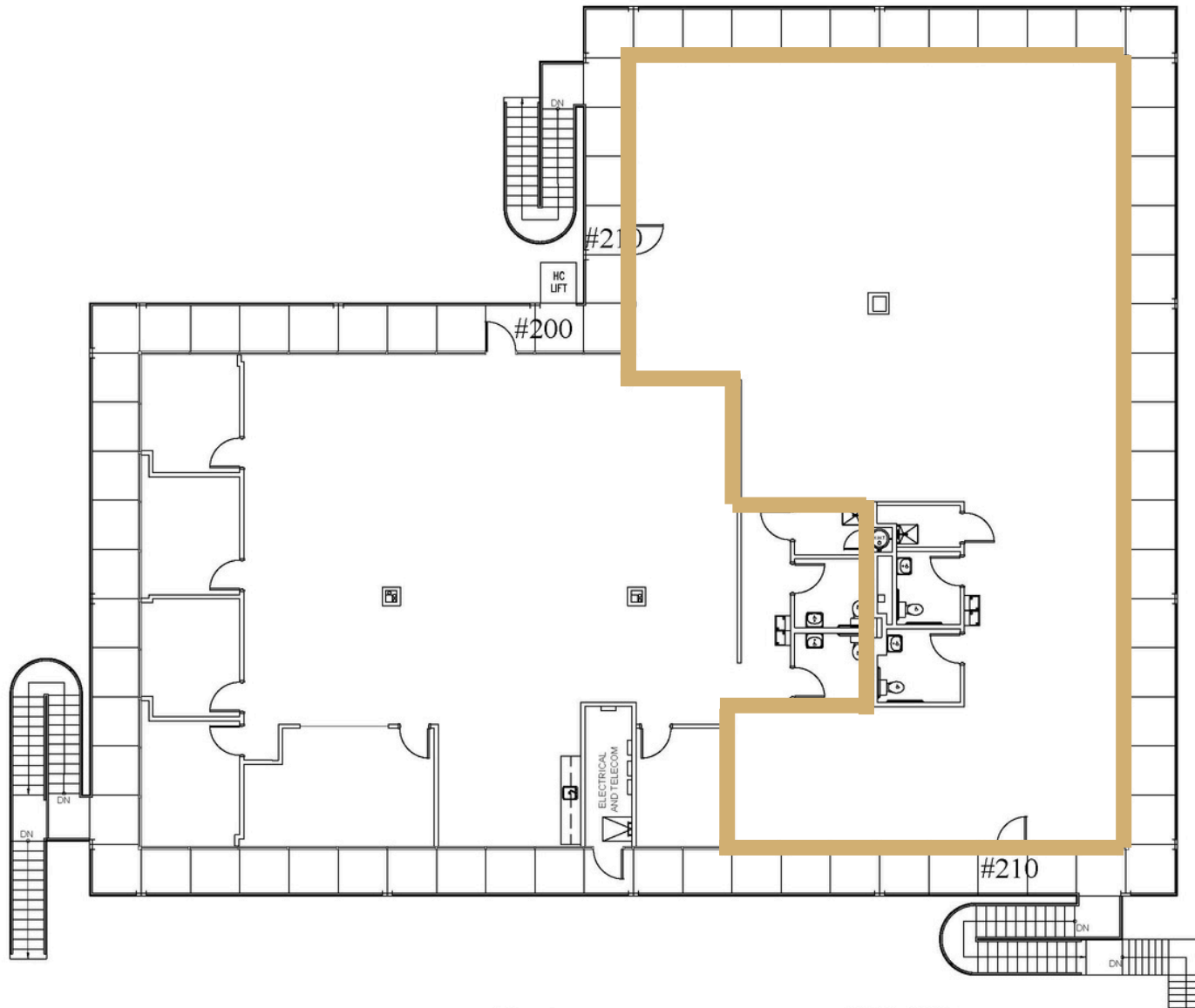
Suite 207 | 4,260 \pm SF



The Garden North

Suite 210 | Office

Available: Now



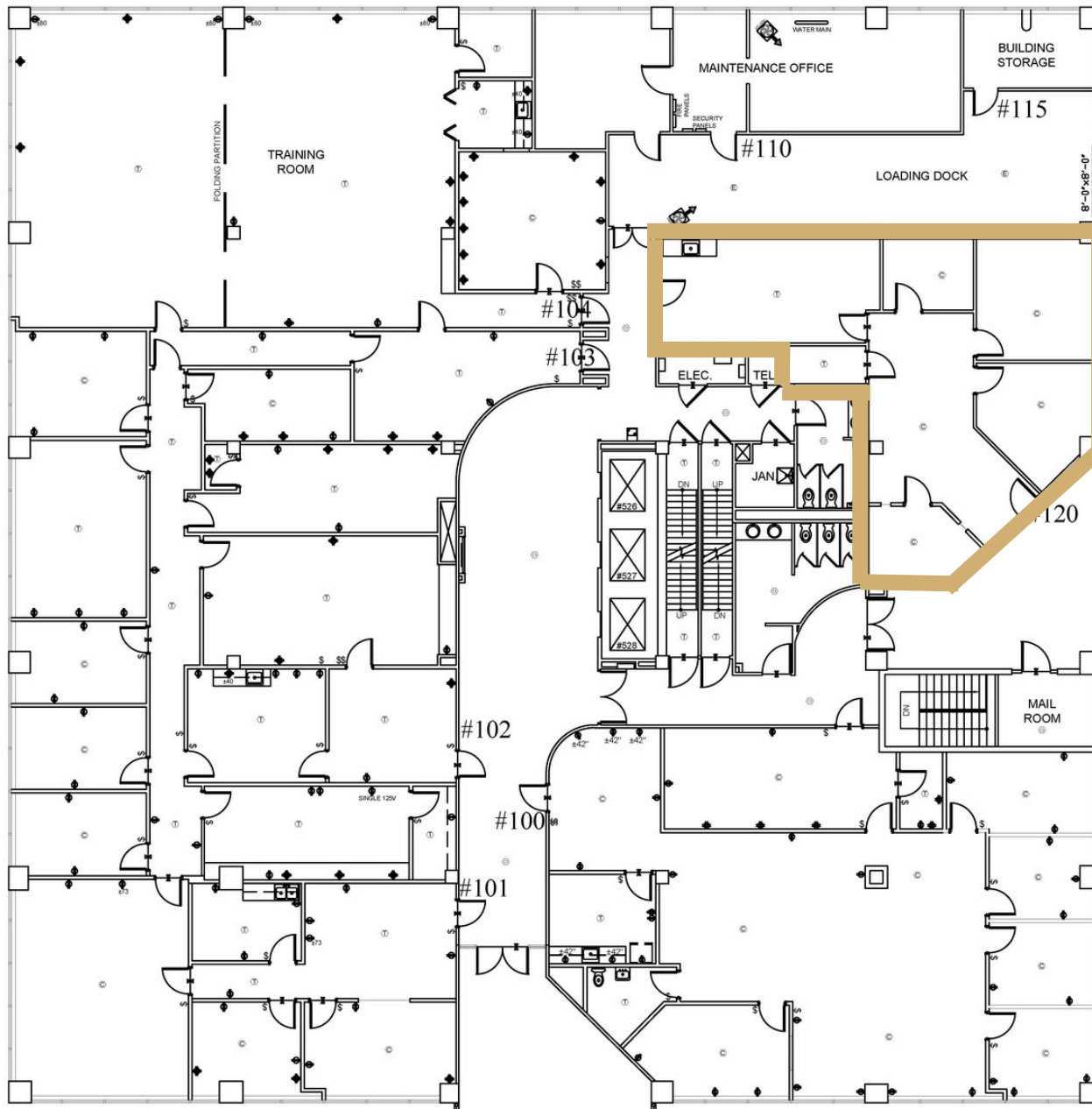
Suite 210
3,745 \pm SF



The Tower | First Floor

Suite 120 | Office

Available: Now



Suite 120 | 1,461± SF

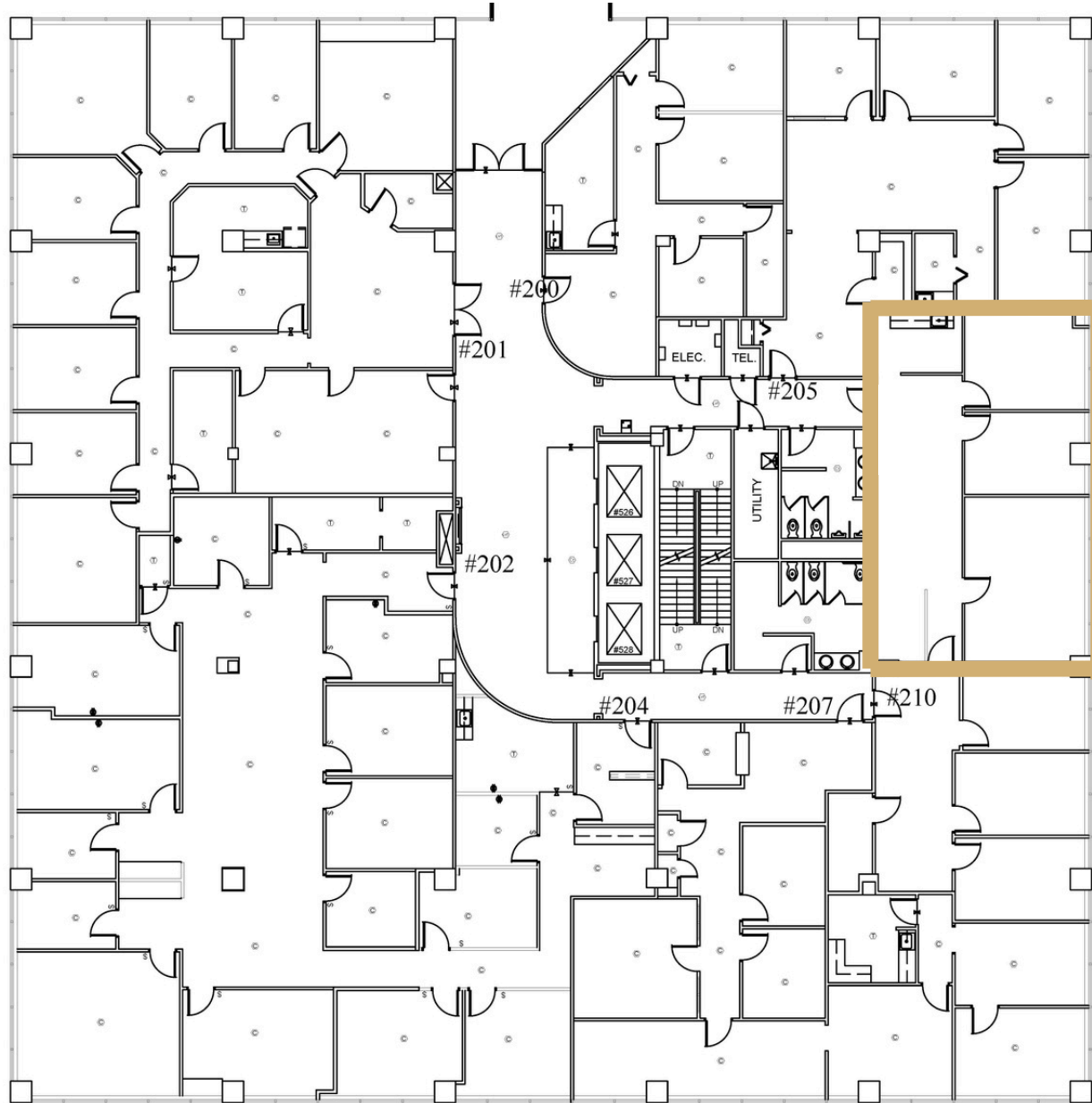
This information contained herein has been obtained from sources deemed to be reliable but is provided for demonstrative purposes only. This information is provided without any guarantee, its accuracy and reliability should be verified by interested parties, and it is subject to change without notice or obligation. Horrell Company assumes no responsibility for the accuracy or reliability of the information herein.



The Tower | 2nd Floor

Suite 211 | Office

Available: Now



Suite 211 | 1,216 \pm SF

This information contained herein has been obtained from sources deemed to be reliable but is provided for demonstrative purposes only. This information is provided without any guarantee, its accuracy and reliability should be verified by interested parties, and it is subject to change without notice or obligation. Horrell Company assumes no responsibility for the accuracy or reliability of the information herein.



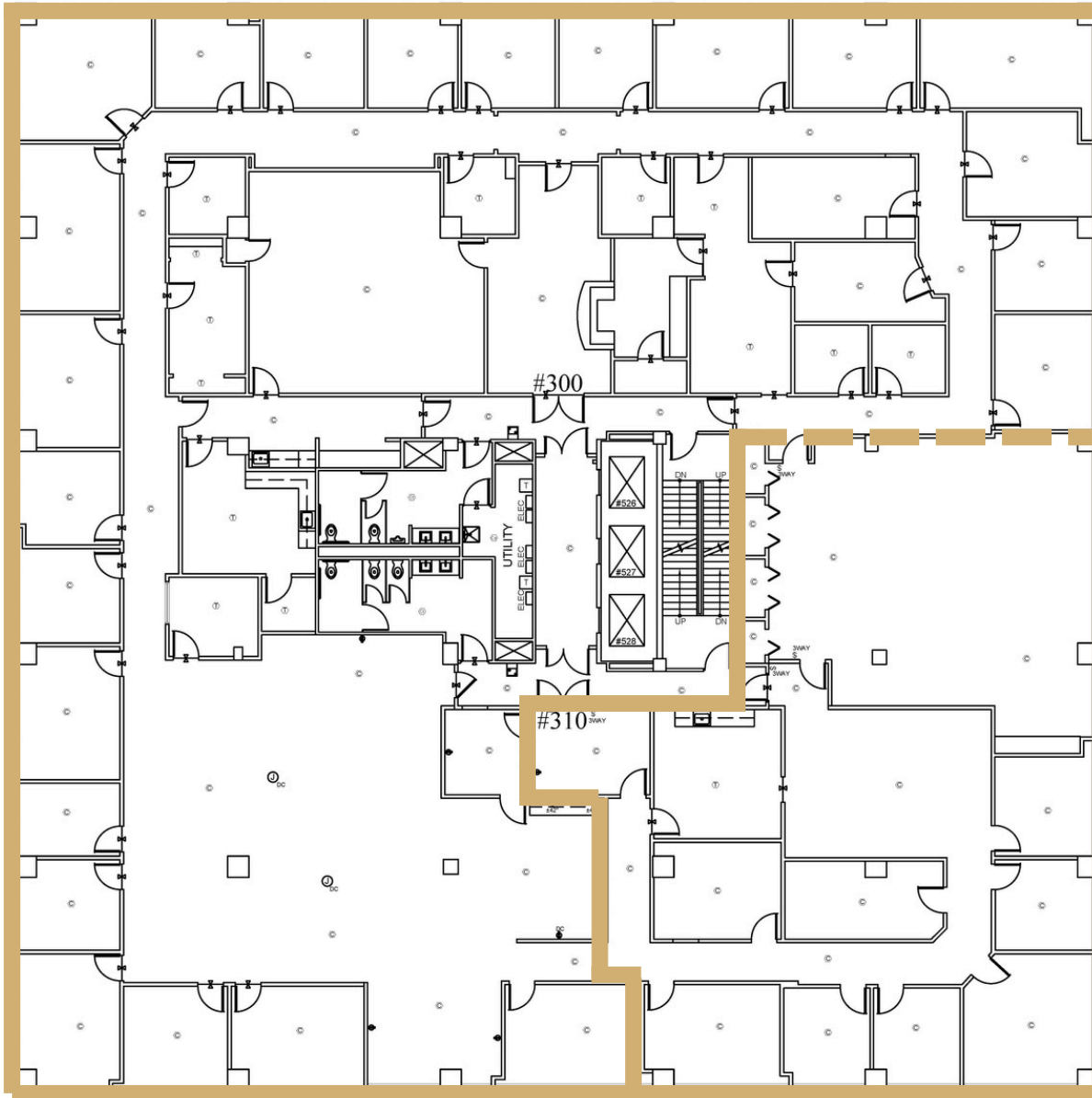
The Tower | 3rd Floor

Suite 300 | 12,093 \pm SF

Suite 300 & 310 | Office

Available: Now

Entire 3rd Floor
Up To 16,627 \pm SF Available



Suite 310 | 4,533 \pm SF

This information contained herein has been obtained from sources deemed to be reliable but is provided for demonstrative purposes only. This information is provided without any guarantee, its accuracy and reliability should be verified by interested parties, and it is subject to change without notice or obligation. Horrell Company assumes no responsibility for the accuracy or reliability of the information herein.



The Tower | 4th Floor

Fully Leased | Office



This information contained herein has been obtained from sources deemed to be reliable but is provided for demonstrative purposes only. This information is provided without any guarantee, its accuracy and reliability should be verified by interested parties, and it is subject to change without notice or obligation. Horrell Company assumes no responsibility for the accuracy or reliability of the information herein.

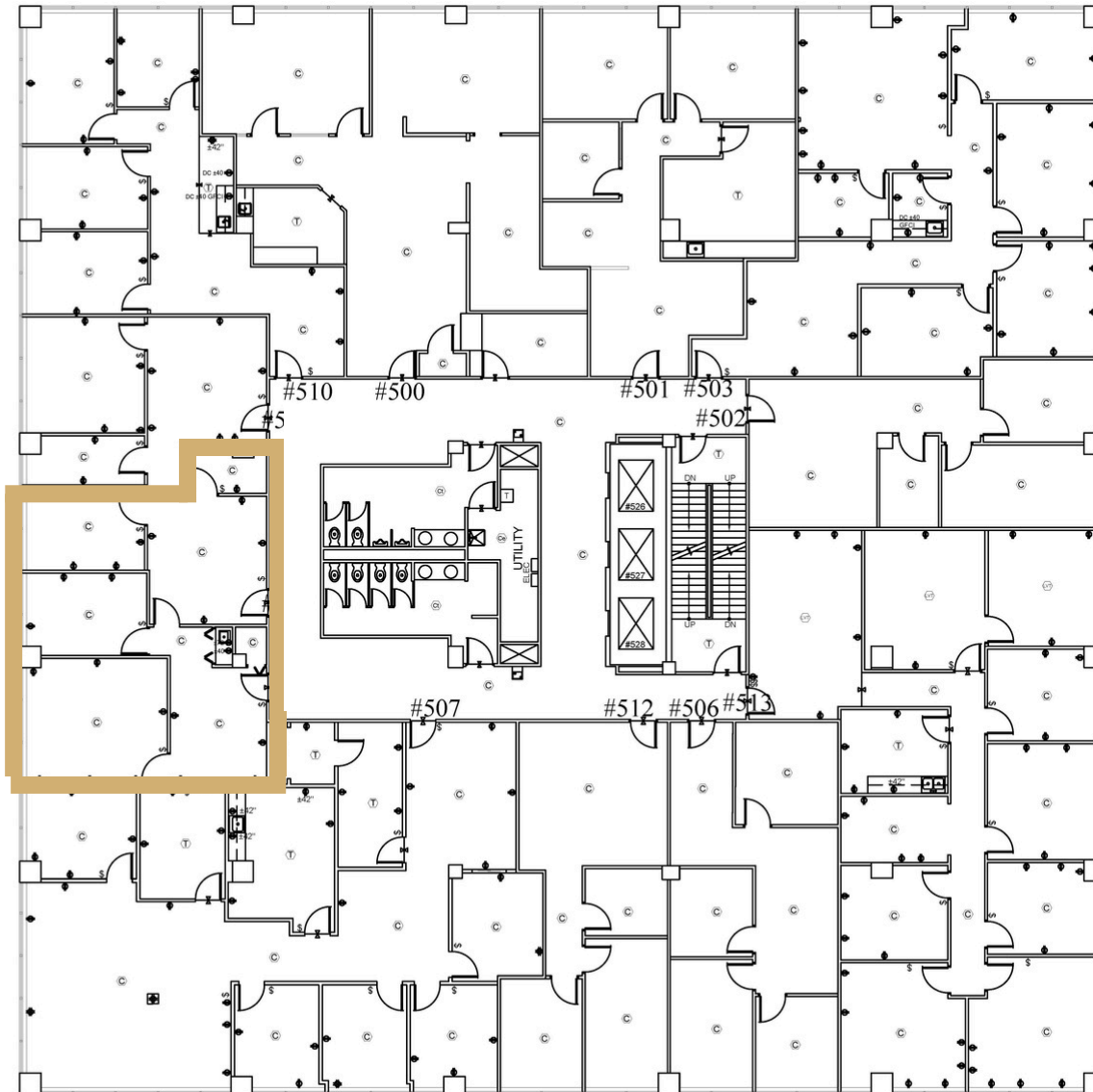


The Tower | 5th Floor

Suite 515 | Office

Available: Now

Suite 515
1,217 \pm SF



This information contained herein has been obtained from sources deemed to be reliable but is provided for demonstrative purposes only. This information is provided without any guarantee, its accuracy and reliability should be verified by interested parties, and it is subject to change without notice or obligation. Horrell Company assumes no responsibility for the accuracy or reliability of the information herein.

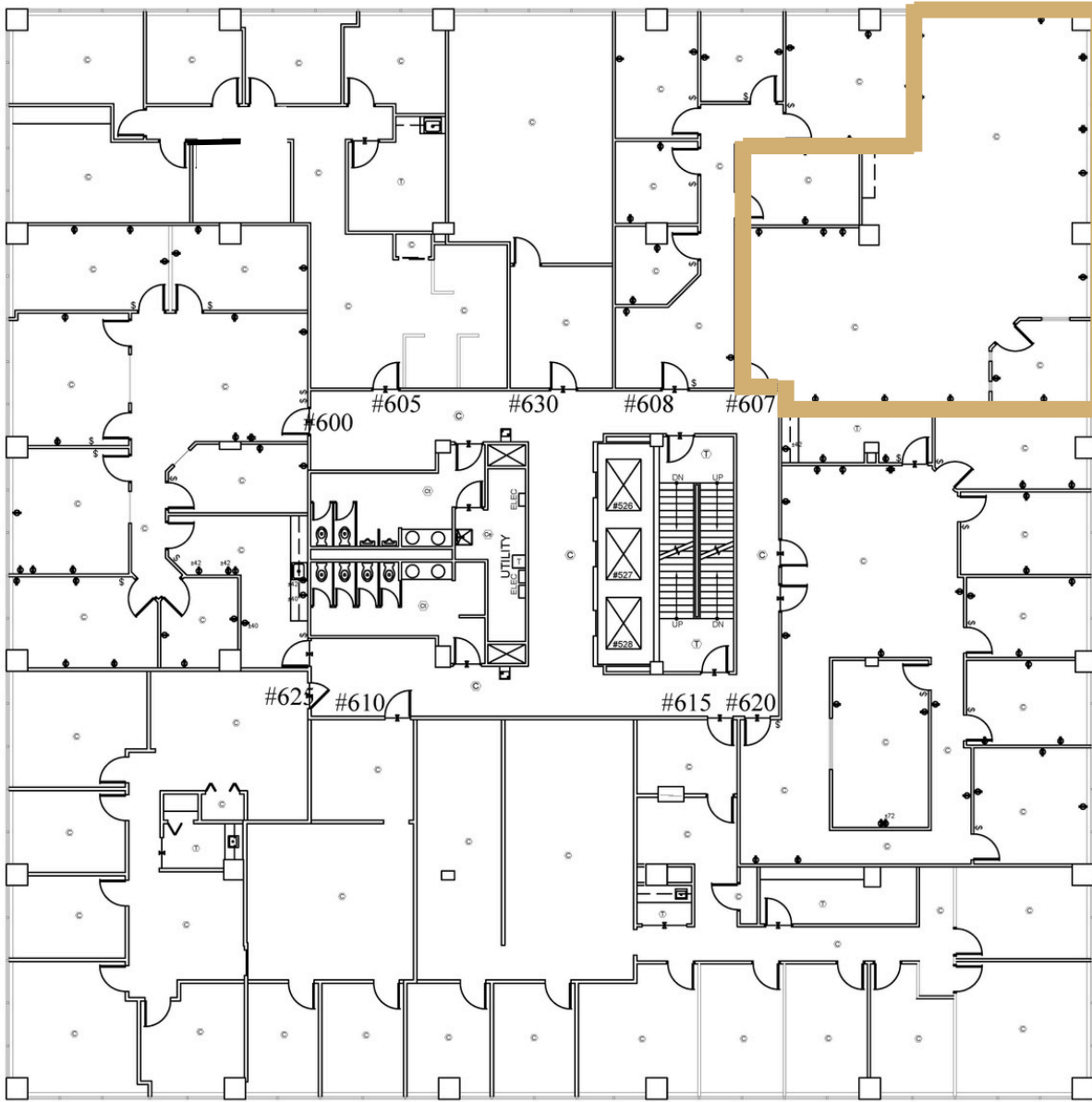


The Tower | 6th Floor

Suite 607 | Office

Available: Now

Suite 607 | 1,662 \pm SF

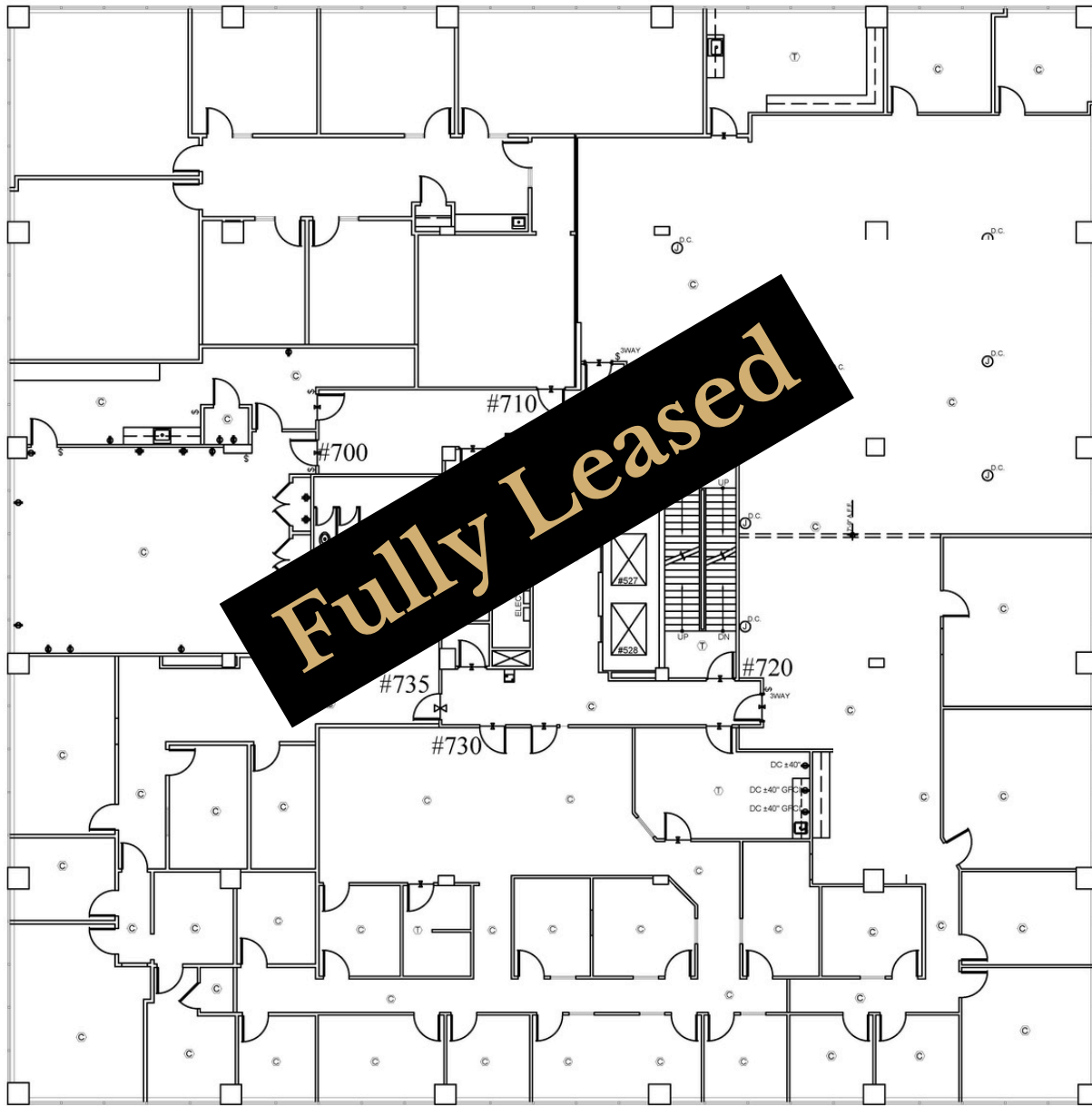


This information contained herein has been obtained from sources deemed to be reliable but is provided for demonstrative purposes only. This information is provided without any guarantee, its accuracy and reliability should be verified by interested parties, and it is subject to change without notice or obligation. Horrell Company assumes no responsibility for the accuracy or reliability of the information herein.



The Tower | 7th Floor

Fully Leased | Office



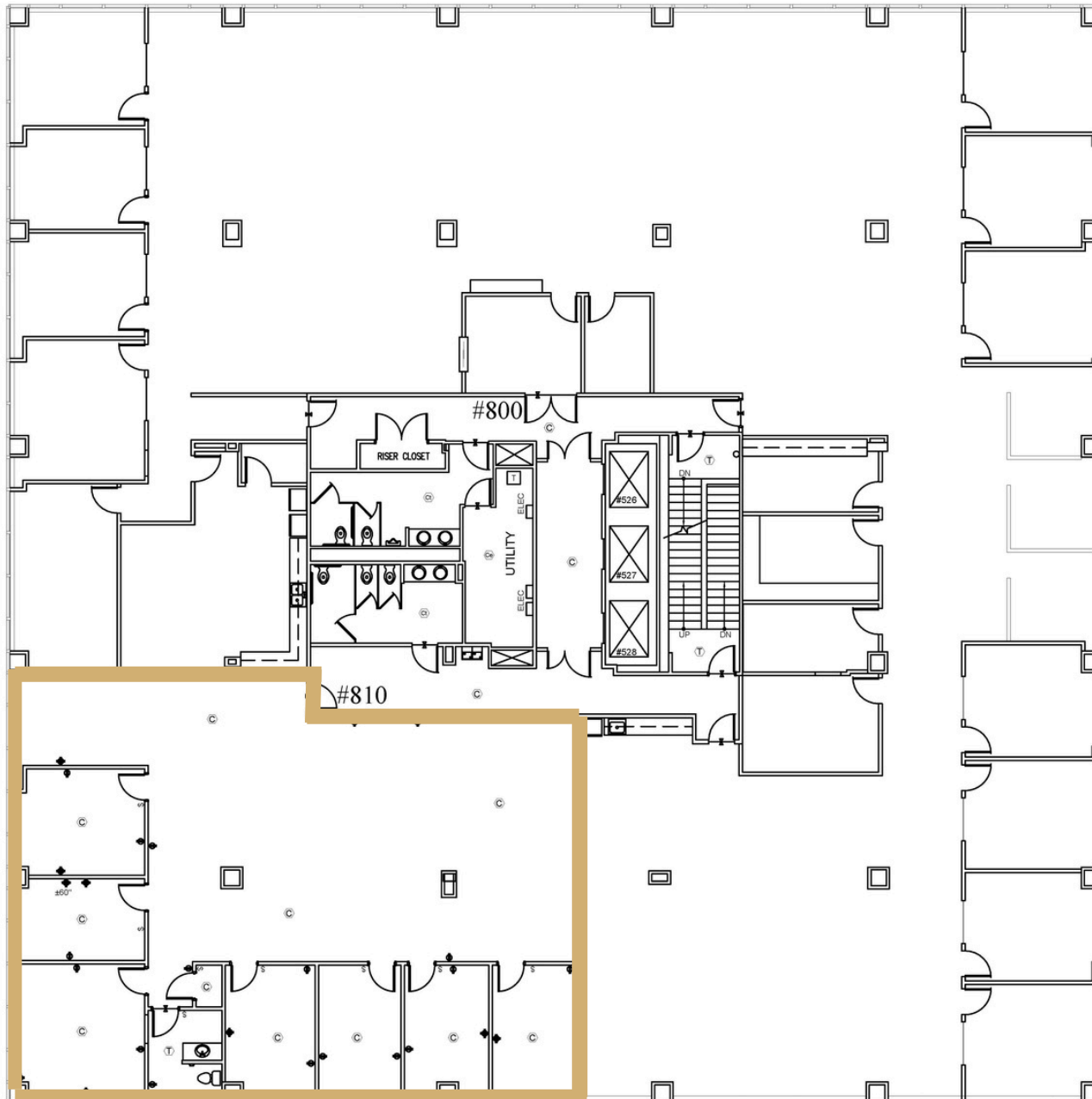
This information contained herein has been obtained from sources deemed to be reliable but is provided for demonstrative purposes only. This information is provided without any guarantee, its accuracy and reliability should be verified by interested parties, and it is subject to change without notice or obligation. Horrell Company assumes no responsibility for the accuracy or reliability of the information herein.



The Tower | 8th Floor

Suite 810 | Office

Available: Now



Suite 810 | 3,590 \pm SF

This information contained herein has been obtained from sources deemed to be reliable but is provided for demonstrative purposes only. This information is provided without any guarantee, its accuracy and reliability should be verified by interested parties, and it is subject to change without notice or obligation. Horrell Company assumes no responsibility for the accuracy or reliability of the information herein.





Contact Me

Laura Grider

M 615-604-7425

O 615-256-7114

lgrider@horrellcompany.com



3030 Sidco Drive

Nashville, TN 37204

www.horrellcompany.com