

1100-1102 Kermit Drive

Office Space For Lease

The Oaks Tower

*Just  
Reduced*

NOW \$14.00-\$15.00 PSF

Garden North

Garden South



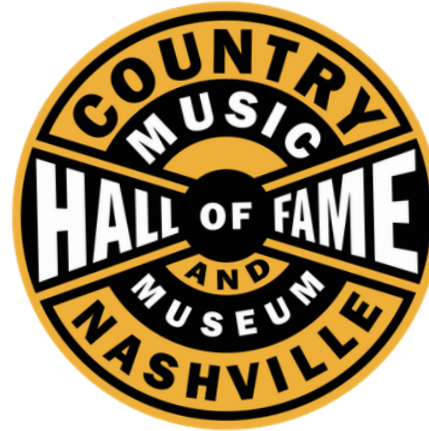
# Property Overview

ADDRESS	1100-1102 Kermit Drive Nashville, TN
SIZE	118,240 $\pm$ SF
PRICE	\$14.00 - \$15.00 PSF
AVAILABLE	877 $\pm$ up to 16,627 $\pm$ SF
HIGHLIGHTS	Renovated Office Spaces Conference Rooms Available Outdoor Picnic Area 4.5 per 1,000 SF Parking Ratio Turn-Key Build Out Available



## FOR LEASE

# Conveniently Located Within 15 Minutes:

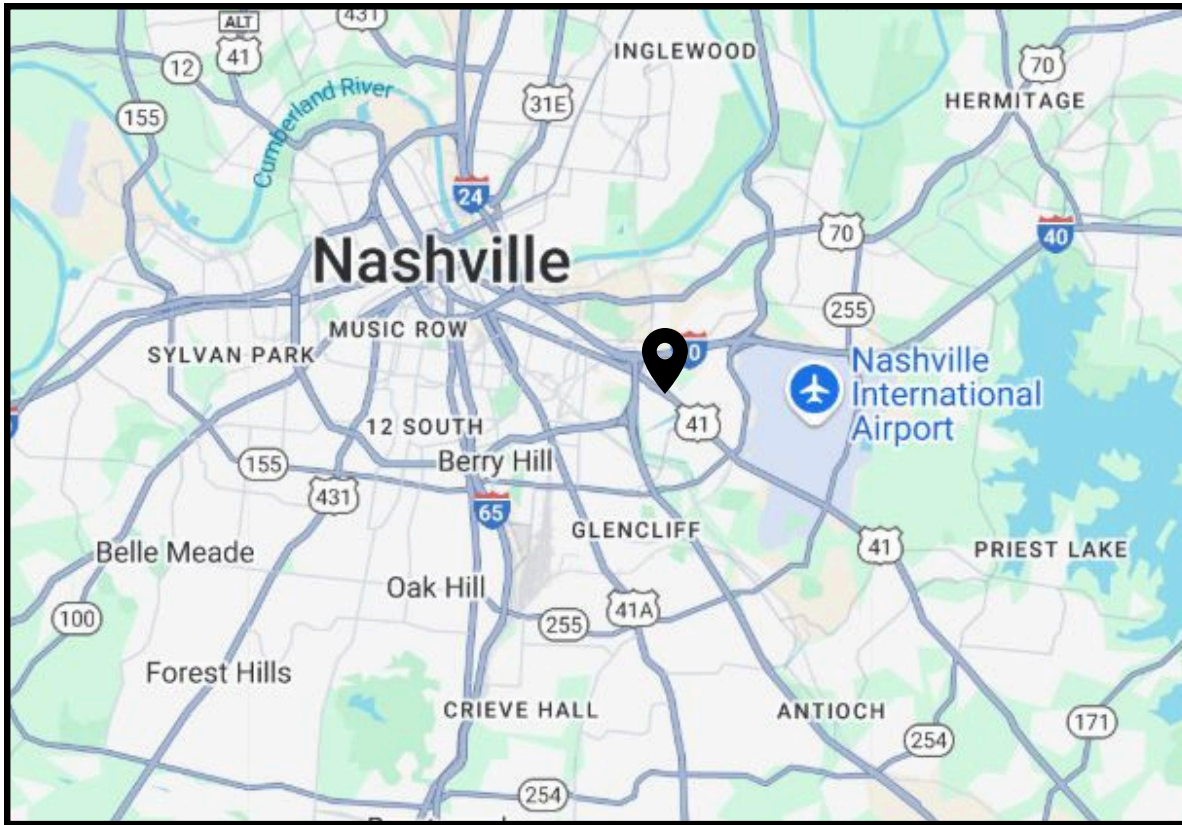


**POPEYES**



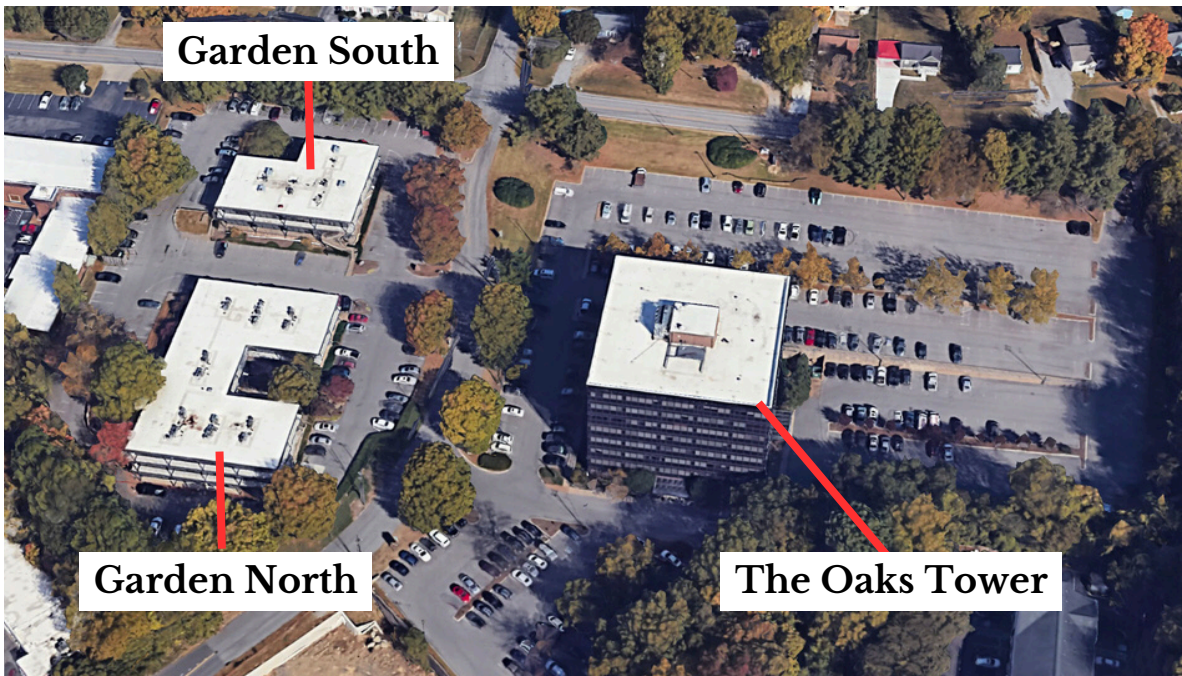
*Holiday Inn*





## Located Near:

- Nashville International Airport
- I-10
- I-65
- I-24
- I-440
- Briley Parkway

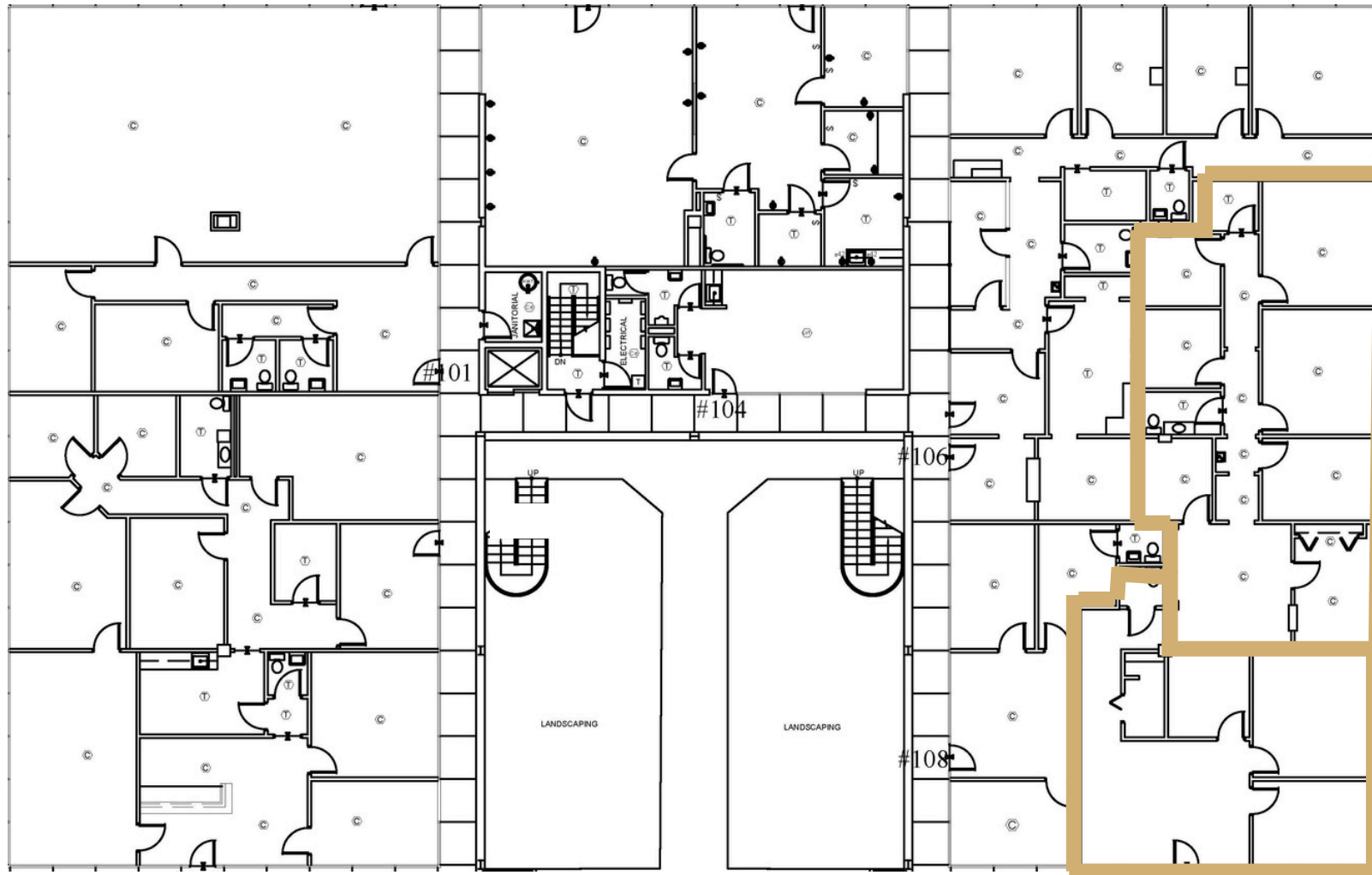


# Up To 2,787<sub>±</sub> SF Available

# The Garden South

## Suite 105 & 109 | Office

Available: 60 Days



Suite 105  
1,680<sub>±</sub> SF

Suite 109  
1,107<sub>±</sub> SF

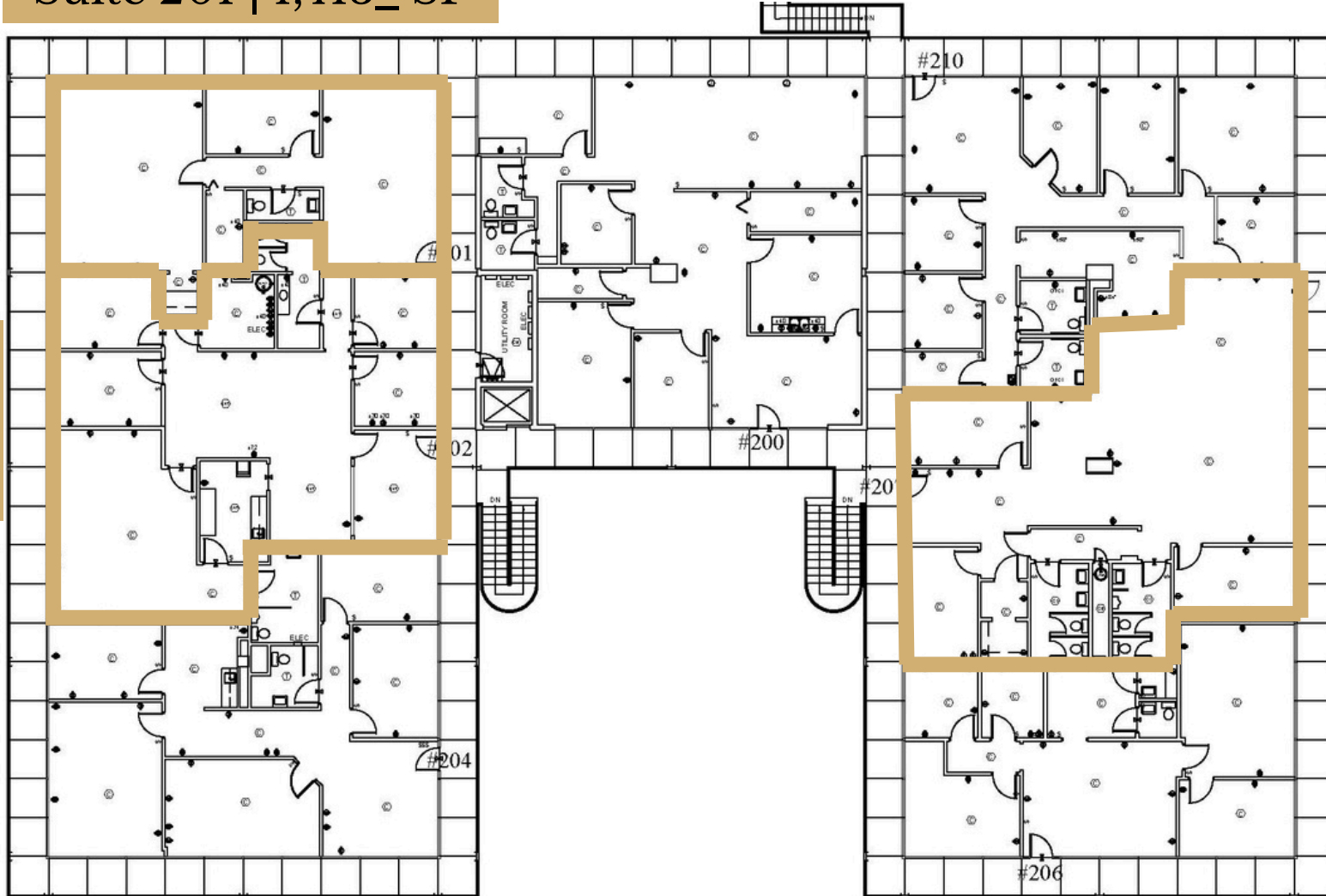
This information contained herein has been obtained from sources deemed to be reliable but is provided for demonstrative purposes only. This information is provided without any guarantee, its accuracy and reliability should be verified by interested parties, and it is subject to change without notice or obligation. Horrell Company assumes no responsibility for the accuracy or reliability of the information herein.



# The Garden South

## Suite 201, 202 & 207 | Office

Suite 201 | 1,413 $\pm$  SF



Suite 202  
2,500 $\pm$   
SF

Suite 201 & 202 | Up To 4,913 $\pm$  SF  
Available

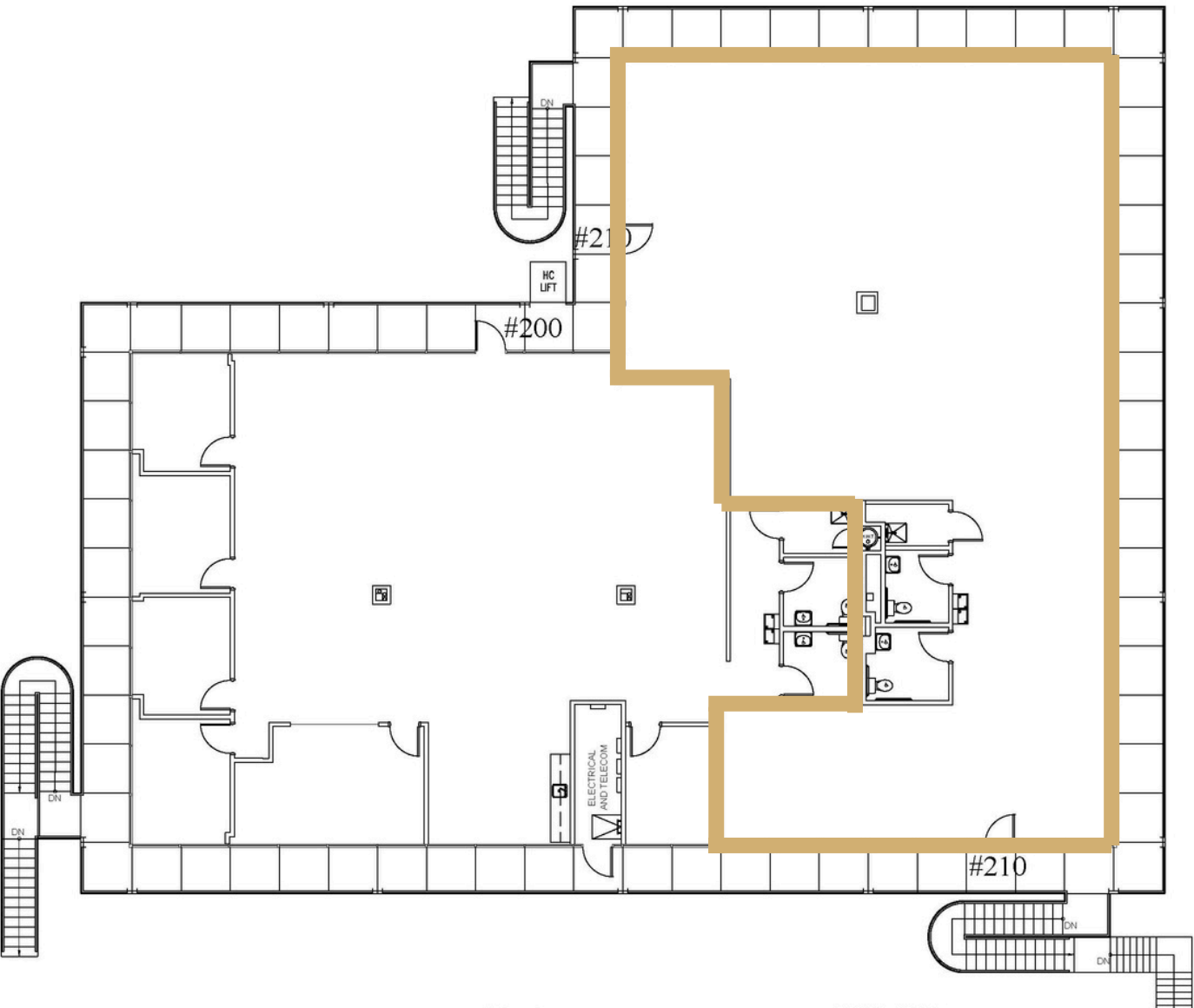
Suite 207 | 2,291 $\pm$  SF



# The Garden North

Suite 210 | Office

Available: Now

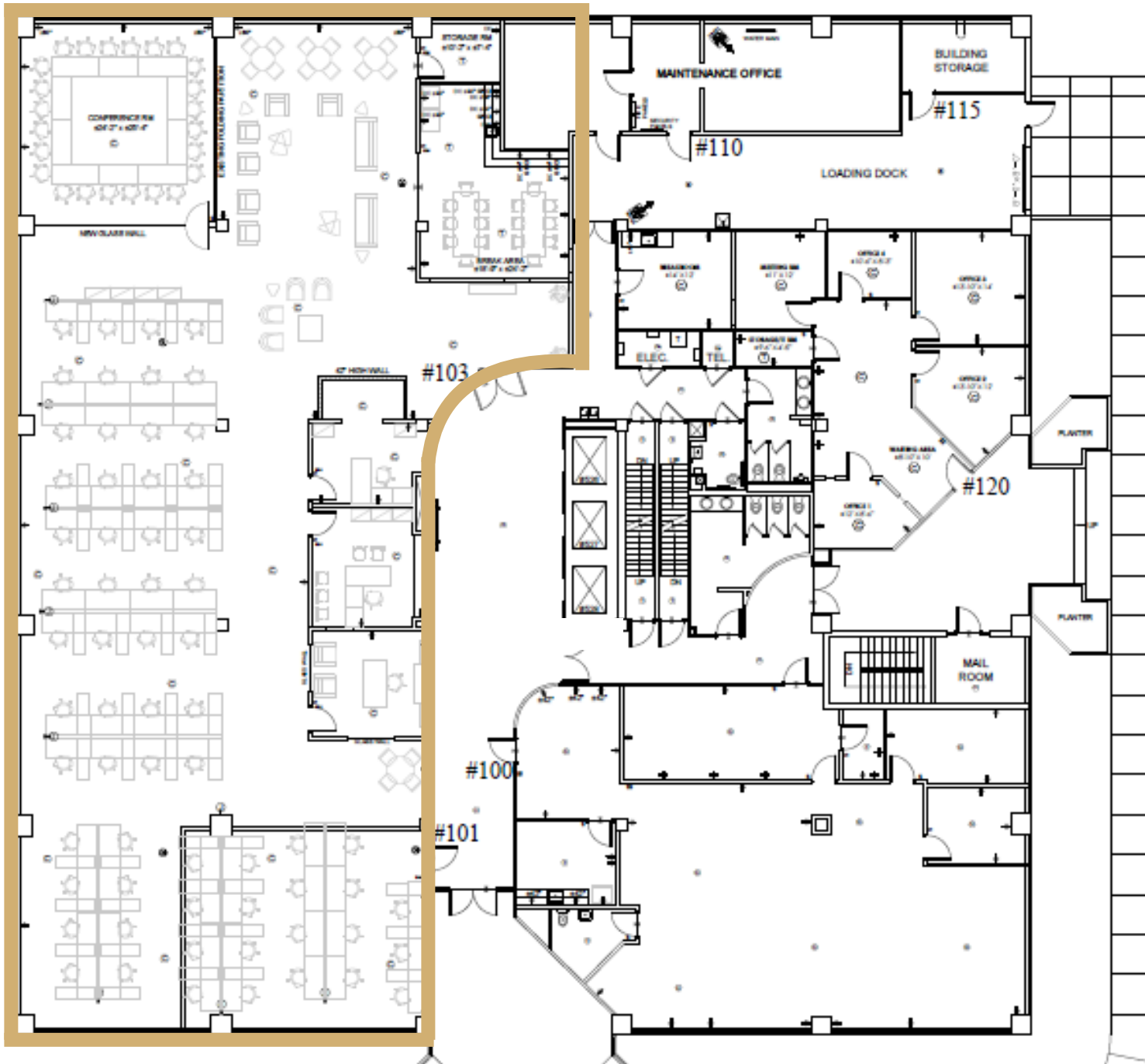


Suite 210  
3,745<sub>±</sub> SF

This information contained herein has been obtained from sources deemed to be reliable but is provided for demonstrative purposes only. This information is provided without any guarantee, its accuracy and reliability should be verified by interested parties, and it is subject to change without notice or obligation. Horrell Company assumes no responsibility for the accuracy or reliability of the information herein.



# The Tower | First Floor



Suite 101-103  
8,351<sub>±</sub> SF

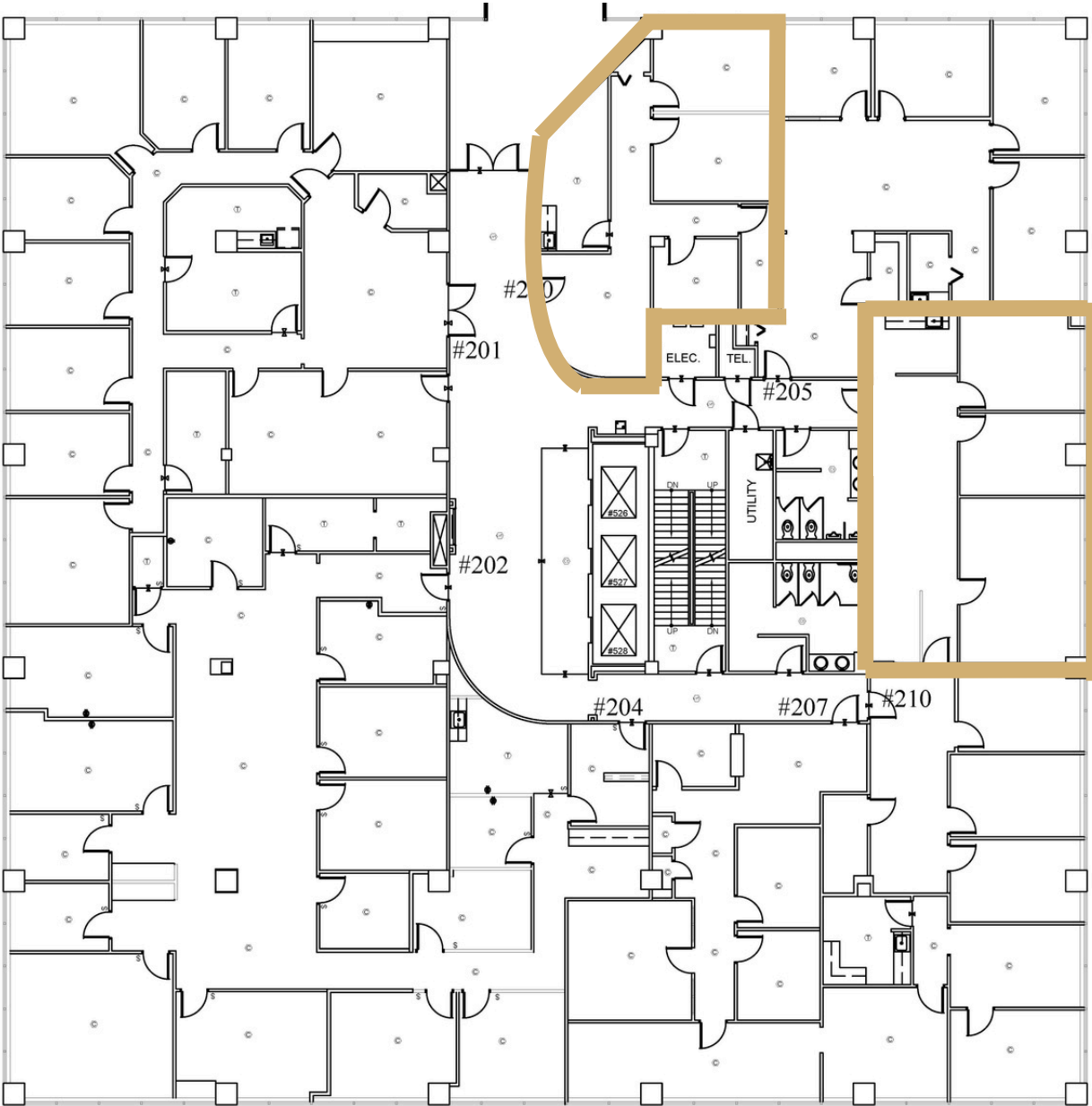


# The Tower | 2nd Floor

Suite 200 & 211 | Office

Suite 200 | 1,049 $\pm$  SF

Available: Now



Suite 211 | 1,216 $\pm$  SF

This information contained herein has been obtained from sources deemed to be reliable but is provided for demonstrative purposes only. This information is provided without any guarantee, its accuracy and reliability should be verified by interested parties, and it is subject to change without notice or obligation. Horrell Company assumes no responsibility for the accuracy or reliability of the information herein.



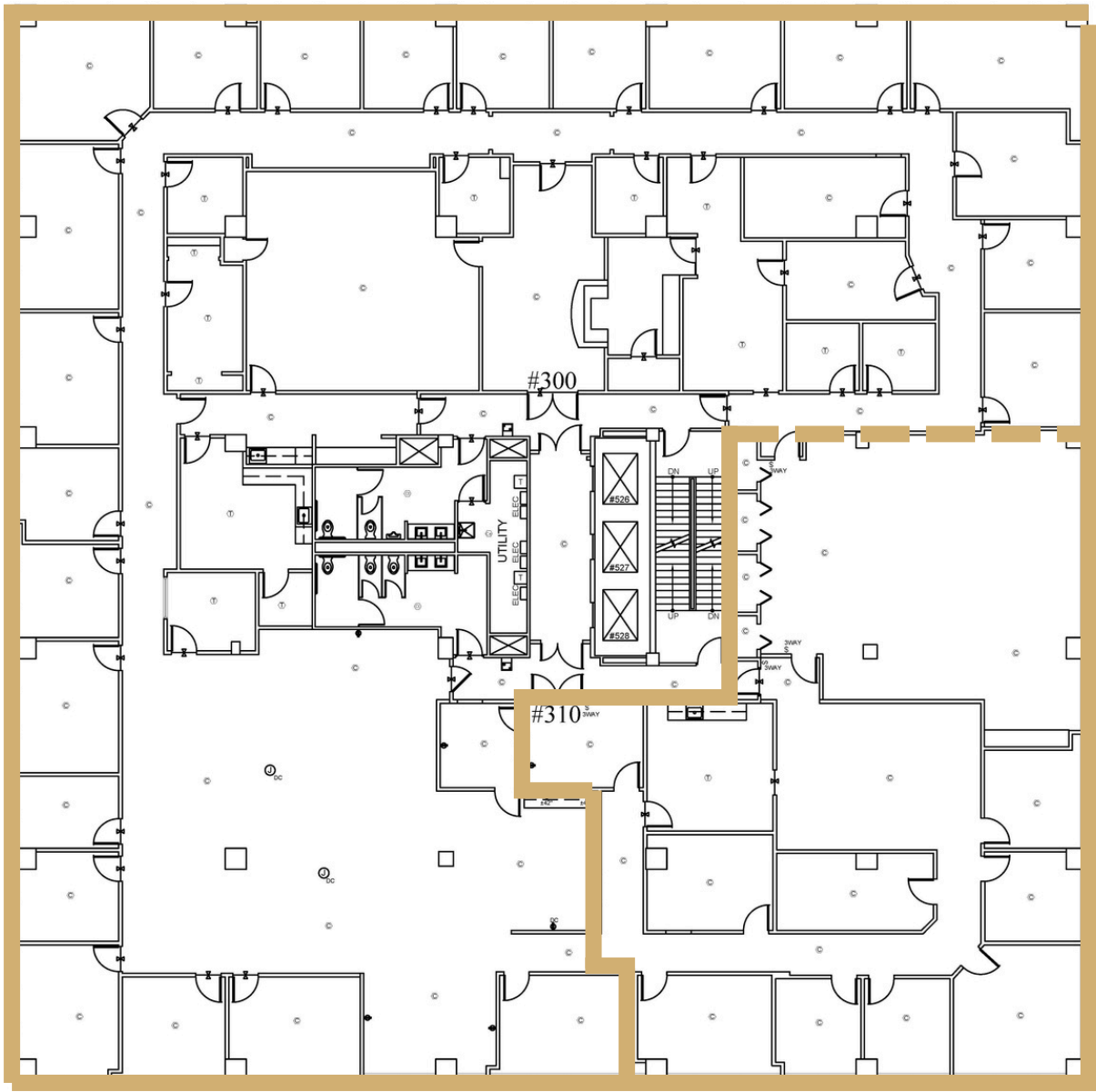
# The Tower | 3rd Floor

Suite 300 & 310 | Office

Suite 300 | 12,093<sub>±</sub> SF

Available: Now

Entire 3rd Floor  
Up To 16,627<sub>±</sub> SF Available



Suite 310 | 4,533<sub>±</sub> SF

This information contained herein has been obtained from sources deemed to be reliable but is provided for demonstrative purposes only. This information is provided without any guarantee, its accuracy and reliability should be verified by interested parties, and it is subject to change without notice or obligation. Horrell Company assumes no responsibility for the accuracy or reliability of the information herein.

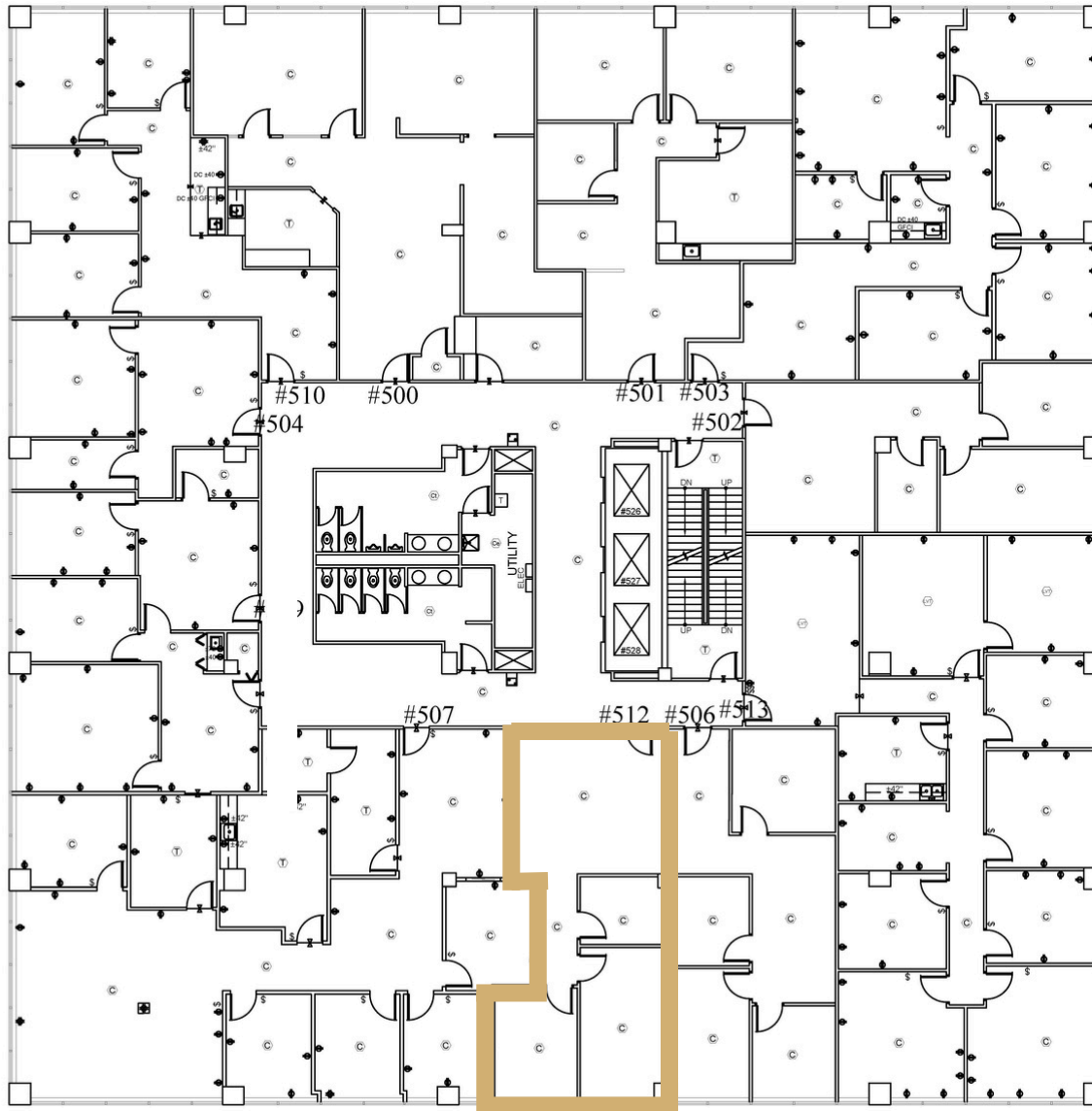


# The Tower | 4th Floor



# The Tower | 5th Floor

## Suite 512 | Office



Suite 512 | 877<sub>±</sub> SF

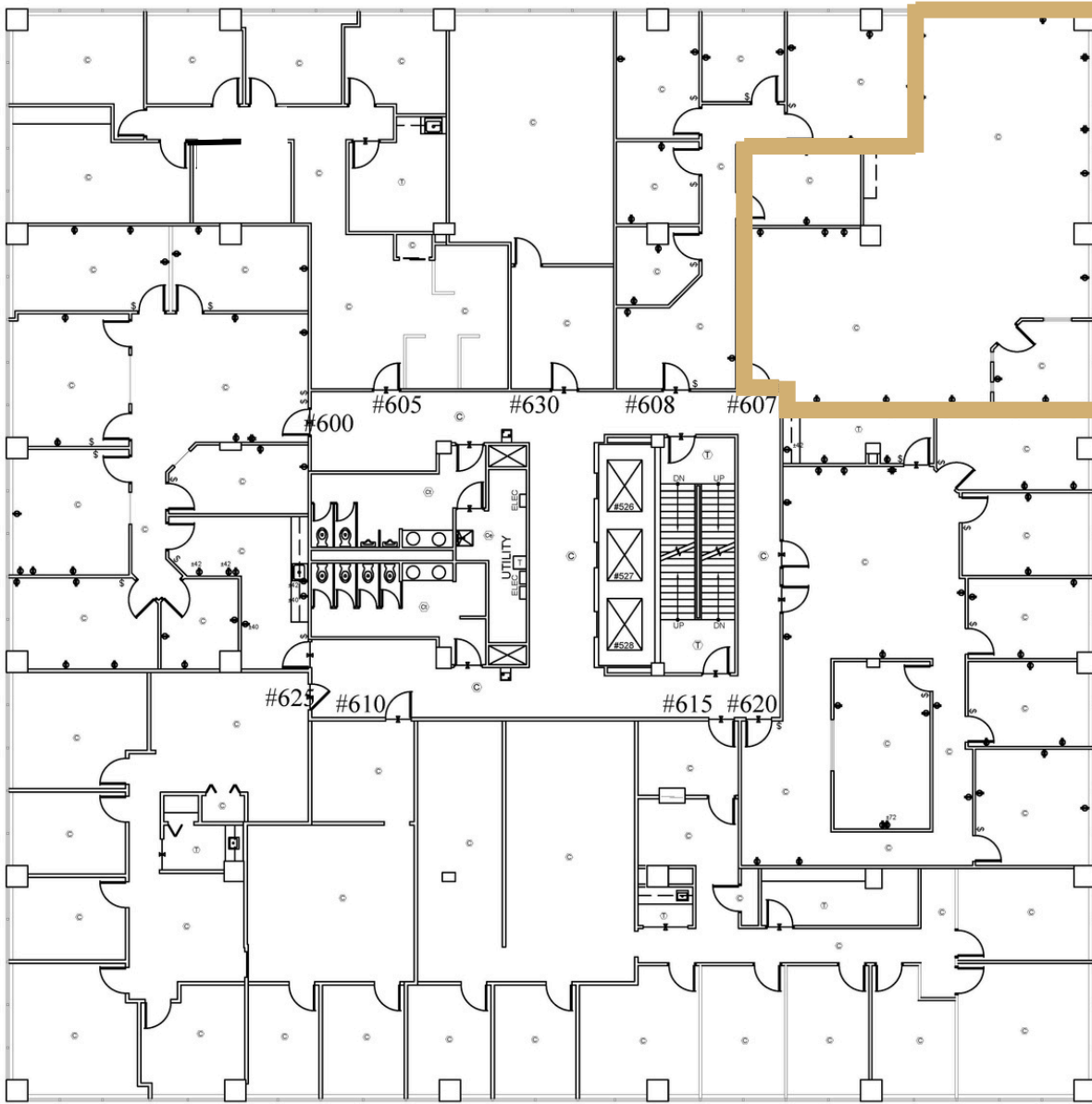


# The Tower | 6th Floor

Suite 607 | Office

Available: Now

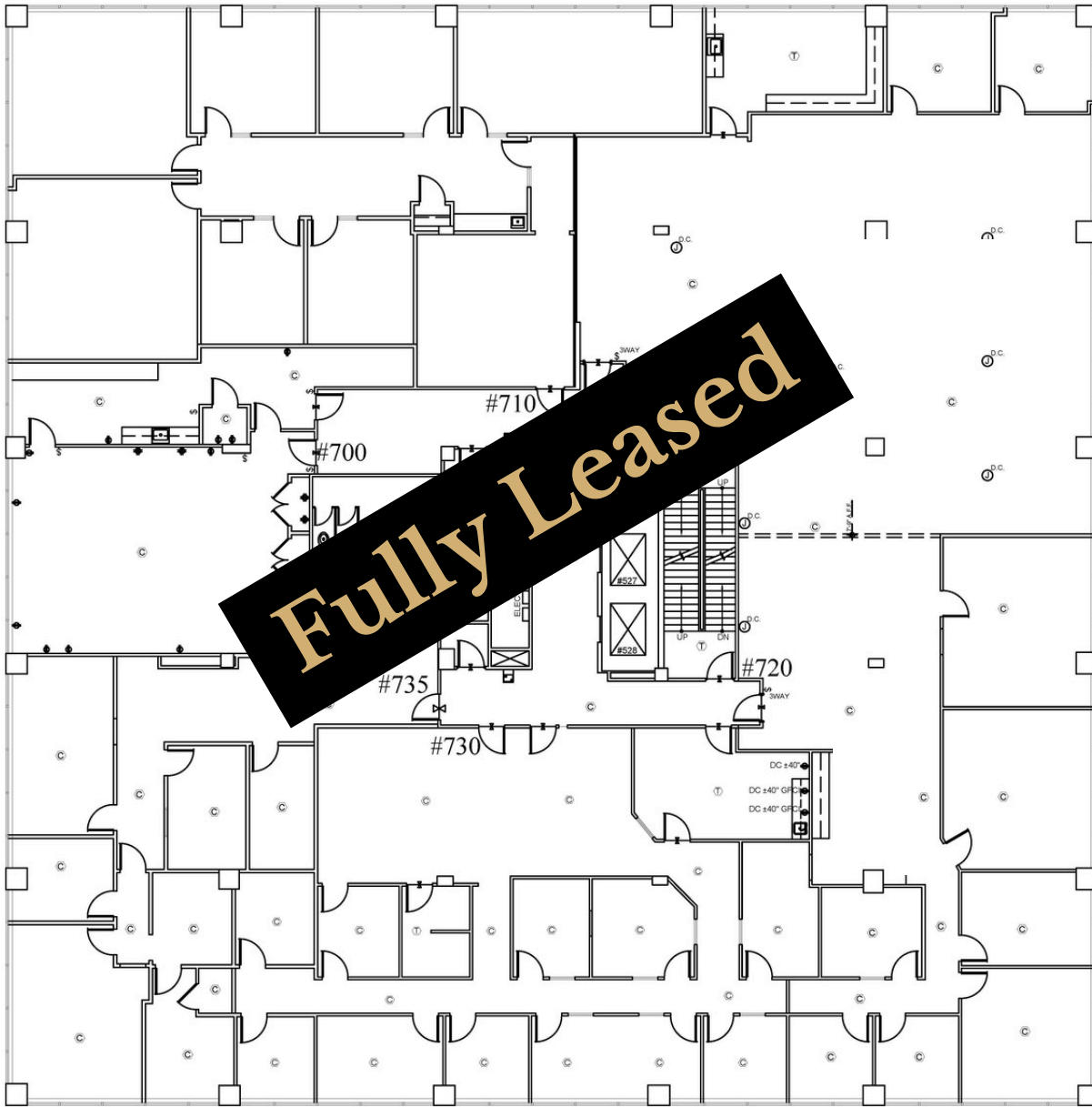
Suite 607 | 1,662 $\pm$  SF



# The Tower | 7th Floor

## Fully Leased | Office

---



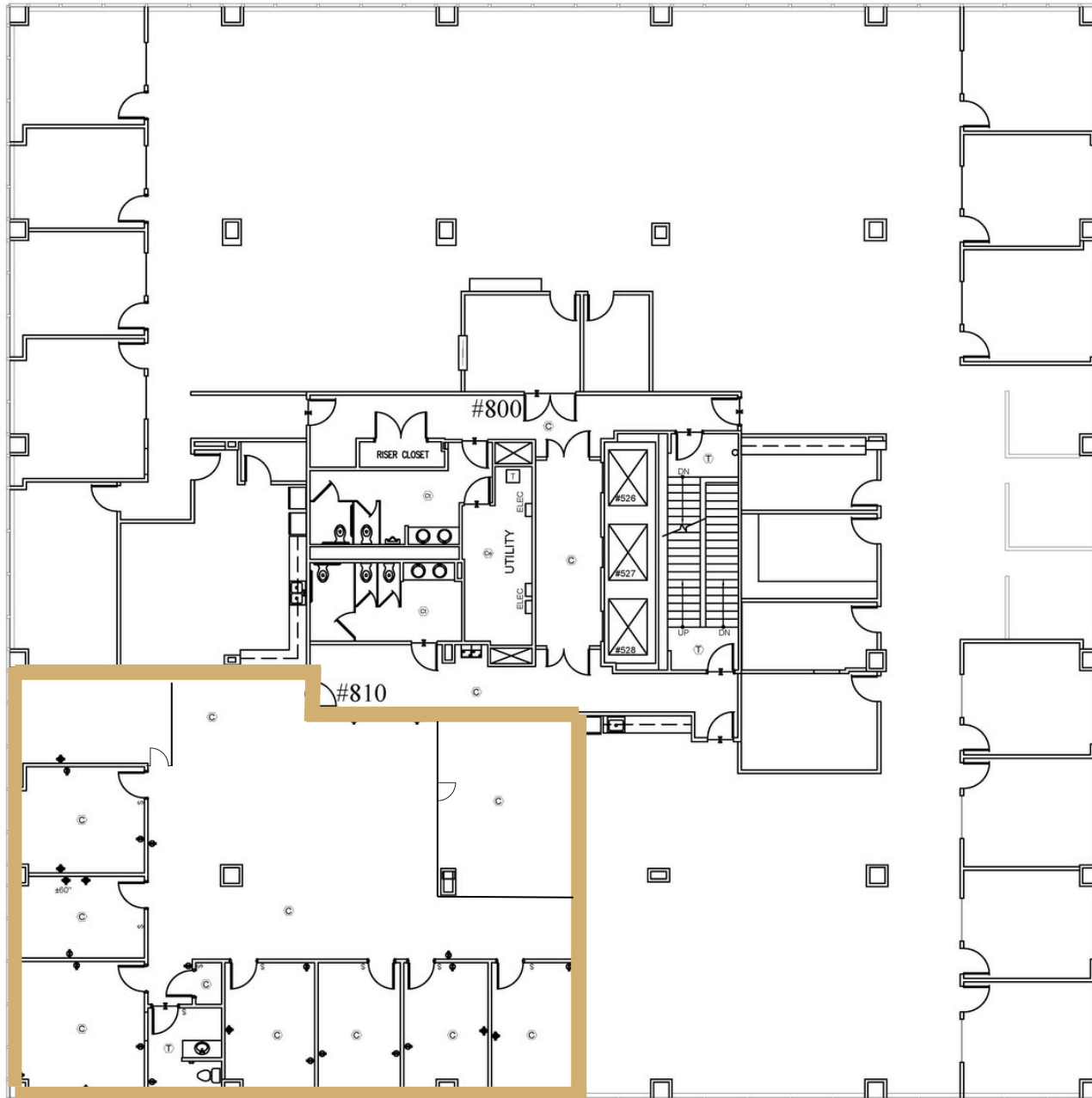
This information contained herein has been obtained from sources deemed to be reliable but is provided for demonstrative purposes only. This information is provided without any guarantee, its accuracy and reliability should be verified by interested parties, and it is subject to change without notice or obligation. Horrell Company assumes no responsibility for the accuracy or reliability of the information herein.



# The Tower | 8th Floor

Suite 810 | Office

Available: Now



Suite 810 | 3,590<sub>±</sub> SF





# Contact Me

Laura Grider

M 615-604-7425

O 615-256-7114

[lgrider@horrellcompany.com](mailto:lgrider@horrellcompany.com)



3030 Sidco Drive  
Nashville, TN 37204

[www.horrellcompany.com](http://www.horrellcompany.com)