

1100-1102
Kermit Drive



The Oaks Tower



Garden South

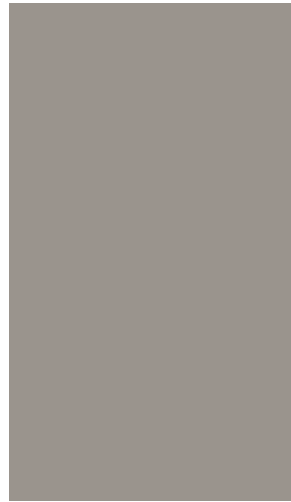
For Lease
Office Space



The information contained herein has been obtained from sources deemed to be reliable and we have no reason to doubt its accuracy or reliability; however, this information is provided without any guarantee, should be verified by interested parties, and is subject to change without notice or obligation. Horrell Company assumes no responsibility for the accuracy or reliability of the information herein.

Property Overview

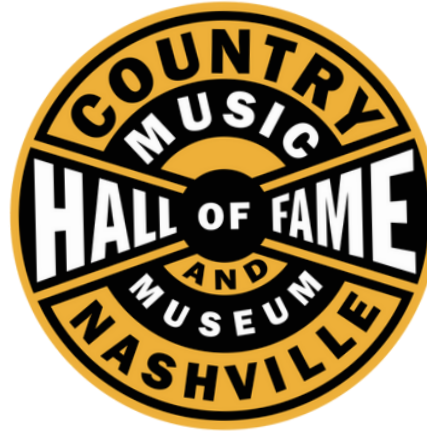
ADDRESS	1100-1102 Kermit Drive Nashville, TN
SIZE	118,240± SF
PRICE	\$16.00 - \$17.50 PSF
AVAILABLE	1,252± up to 6,418± SF
HIGHLIGHTS	Renovated Office Spaces Conference Rooms Available Outdoor Picnic Area 4.5 per 1,000 SF Parking Ratio Turn-Key Build Out Available

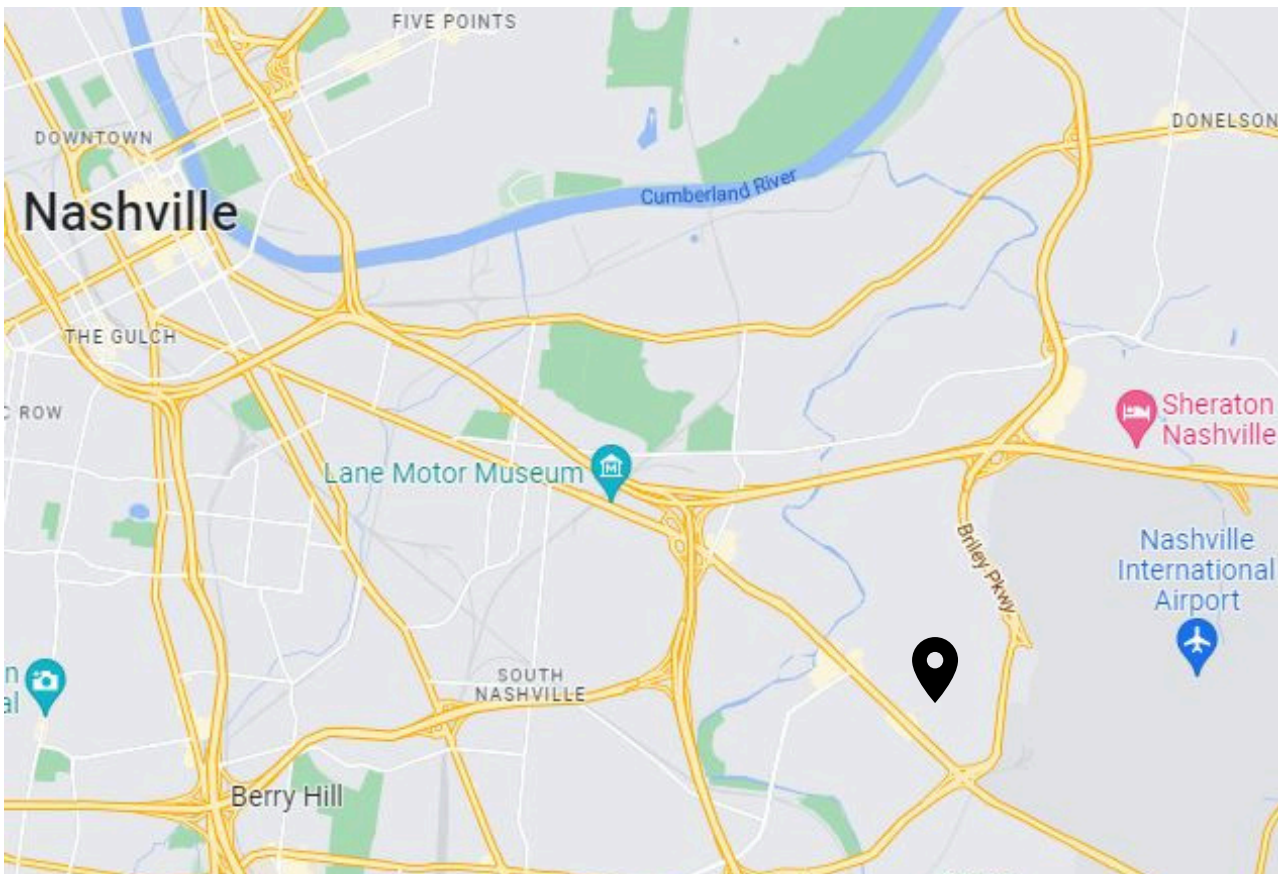


FOR LEASE



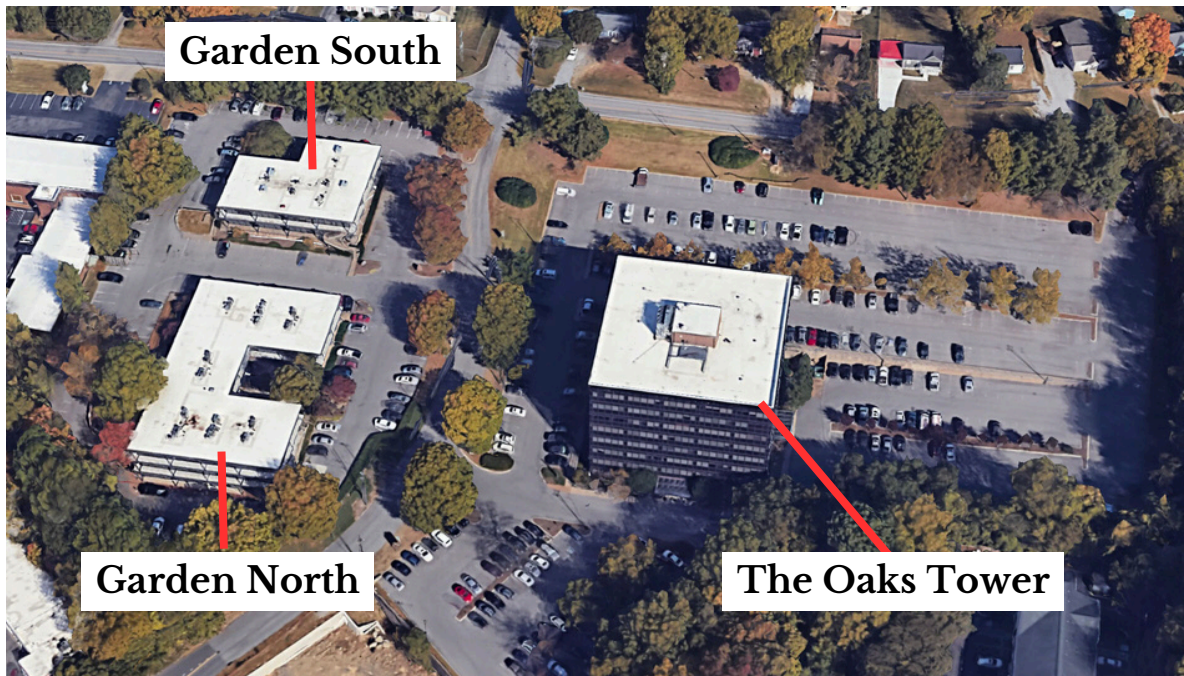
Conveniently Located Within 15 Minutes:





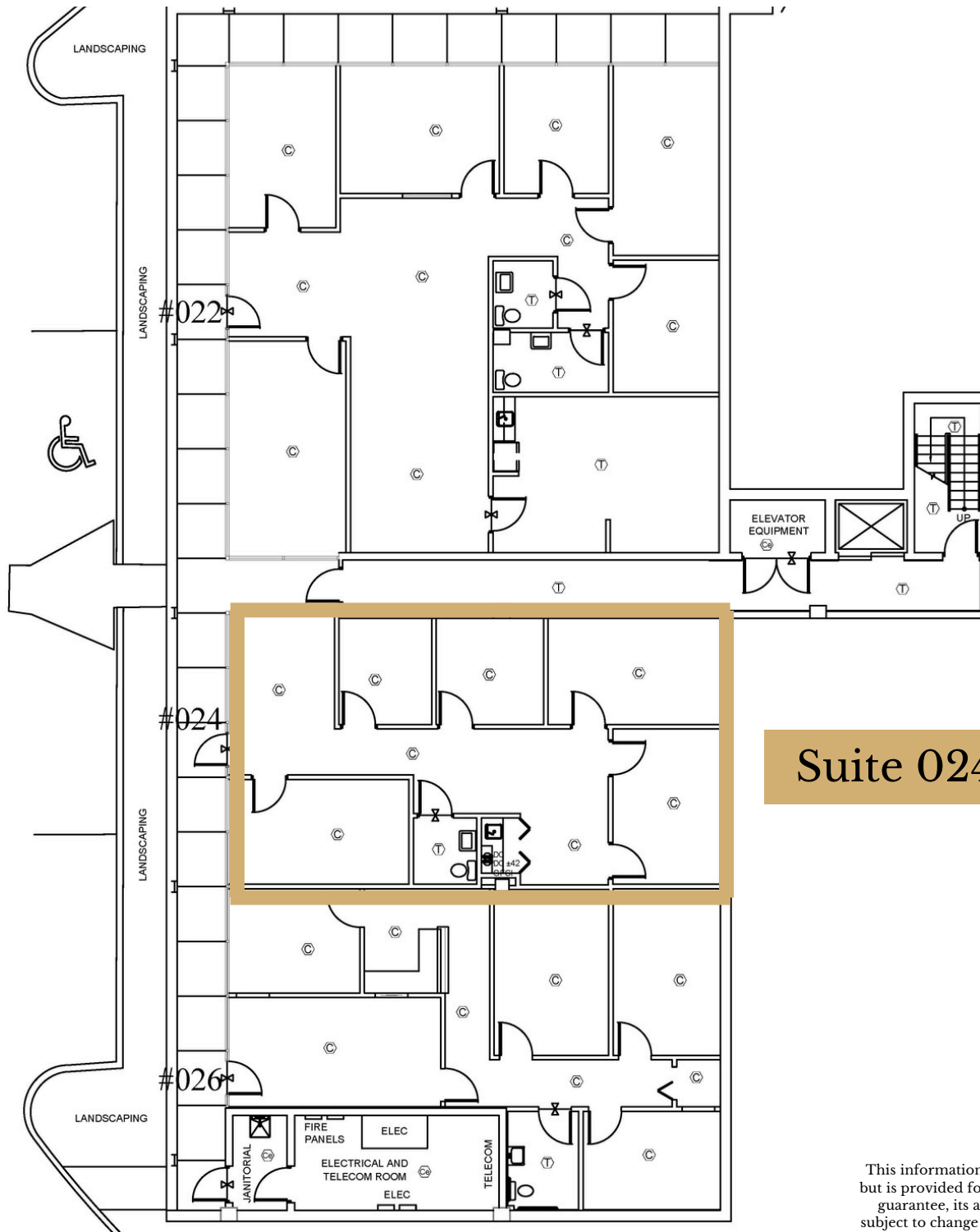
Located Near:

- Nashville International Airport
- I-10
- I-65
- I-24
- I-440
- Briley Parkway



The Garden South

Suite 024 | Office



Suite 024 | 1,280 SF

This information contained herein has been obtained from sources deemed to be reliable but is provided for demonstrative purposes only. This information is provided without any guarantee, its accuracy and reliability should be verified by interested parties, and it is subject to change without notice or obligation. Horrell Company assumes no responsibility for the accuracy or reliability of the information herein.

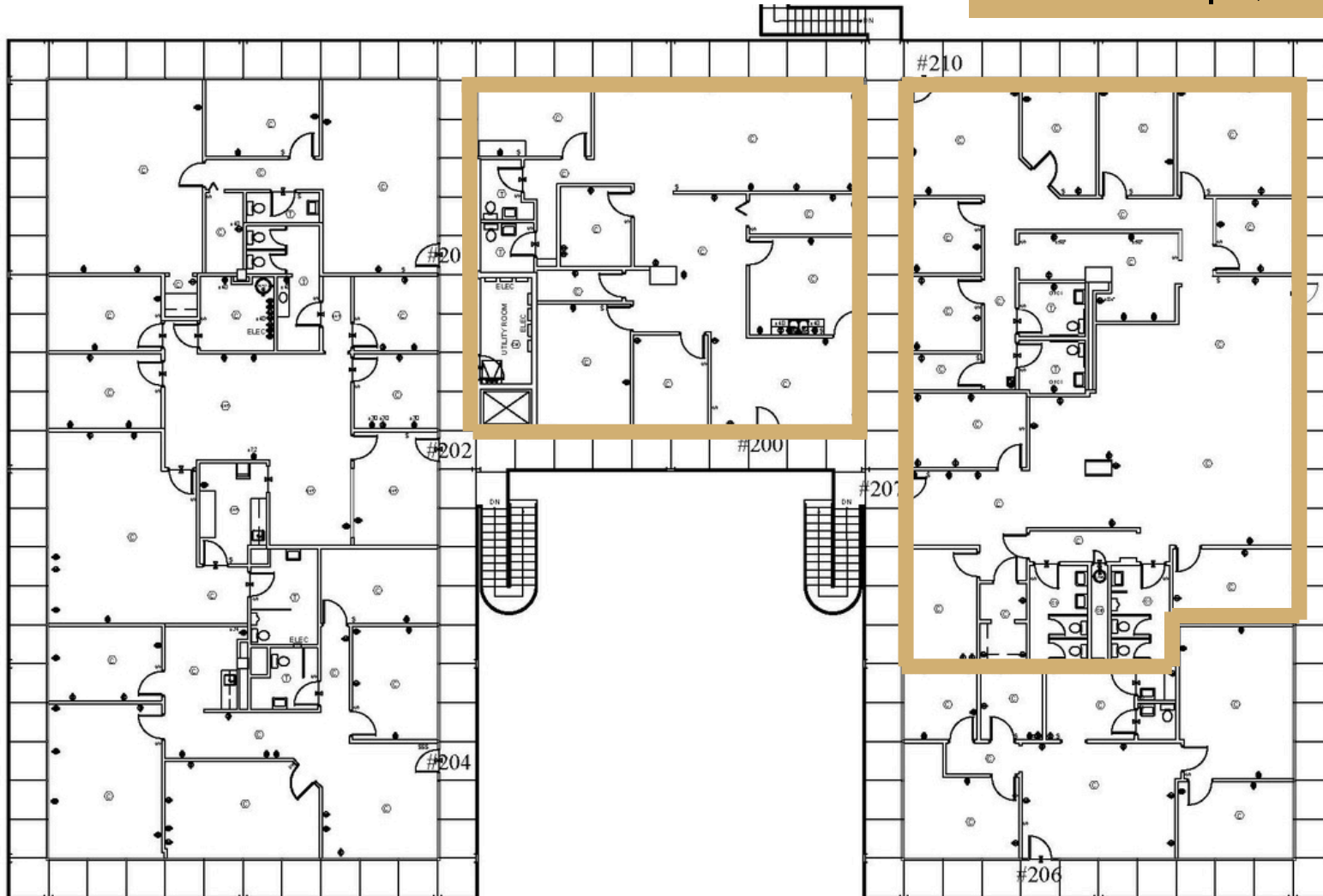


The Garden South

Suite 200 & 207 | Office

Suite 200 | 2,381 \pm SF

Suite 207 | 4,260 \pm SF



This information contained herein has been obtained from sources deemed to be reliable but is provided for demonstrative purposes only. This information is provided without any guarantee, its accuracy and reliability should be verified by interested parties, and it is subject to change without notice or obligation. Horrell Company assumes no responsibility for the accuracy or reliability of the information herein.



The Tower | First Floor

Fully Leased | Office



This information contained herein has been obtained from sources deemed to be reliable but is provided for demonstrative purposes only. This information is provided without any guarantee, its accuracy and reliability should be verified by interested parties, and it is subject to change without notice or obligation. Horrell Company assumes no responsibility for the accuracy or reliability of the information herein.

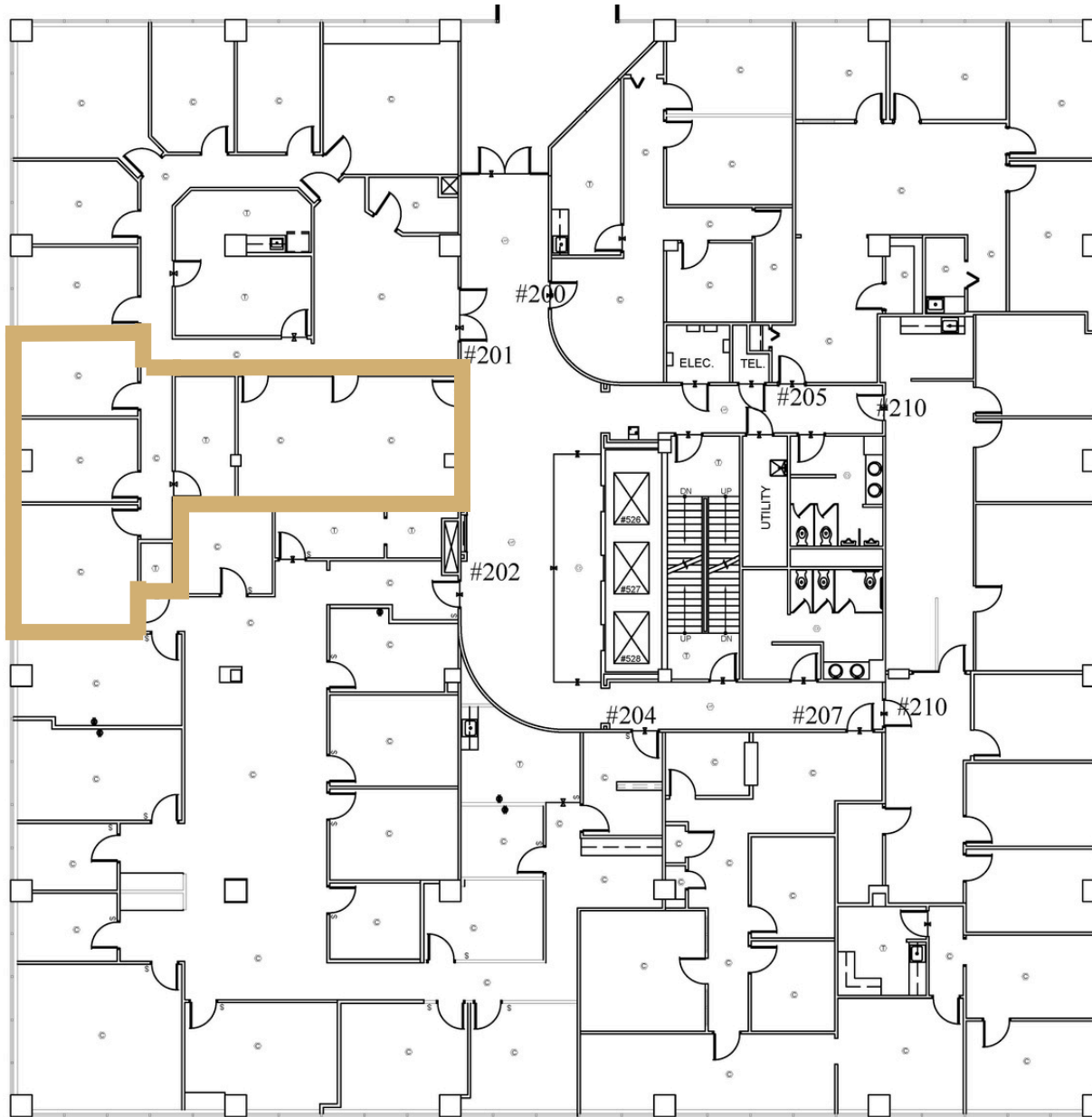


The Tower | 2nd Floor

Suite 202 | Office

Suite 202 | 1,252 \pm SF

Available: Now



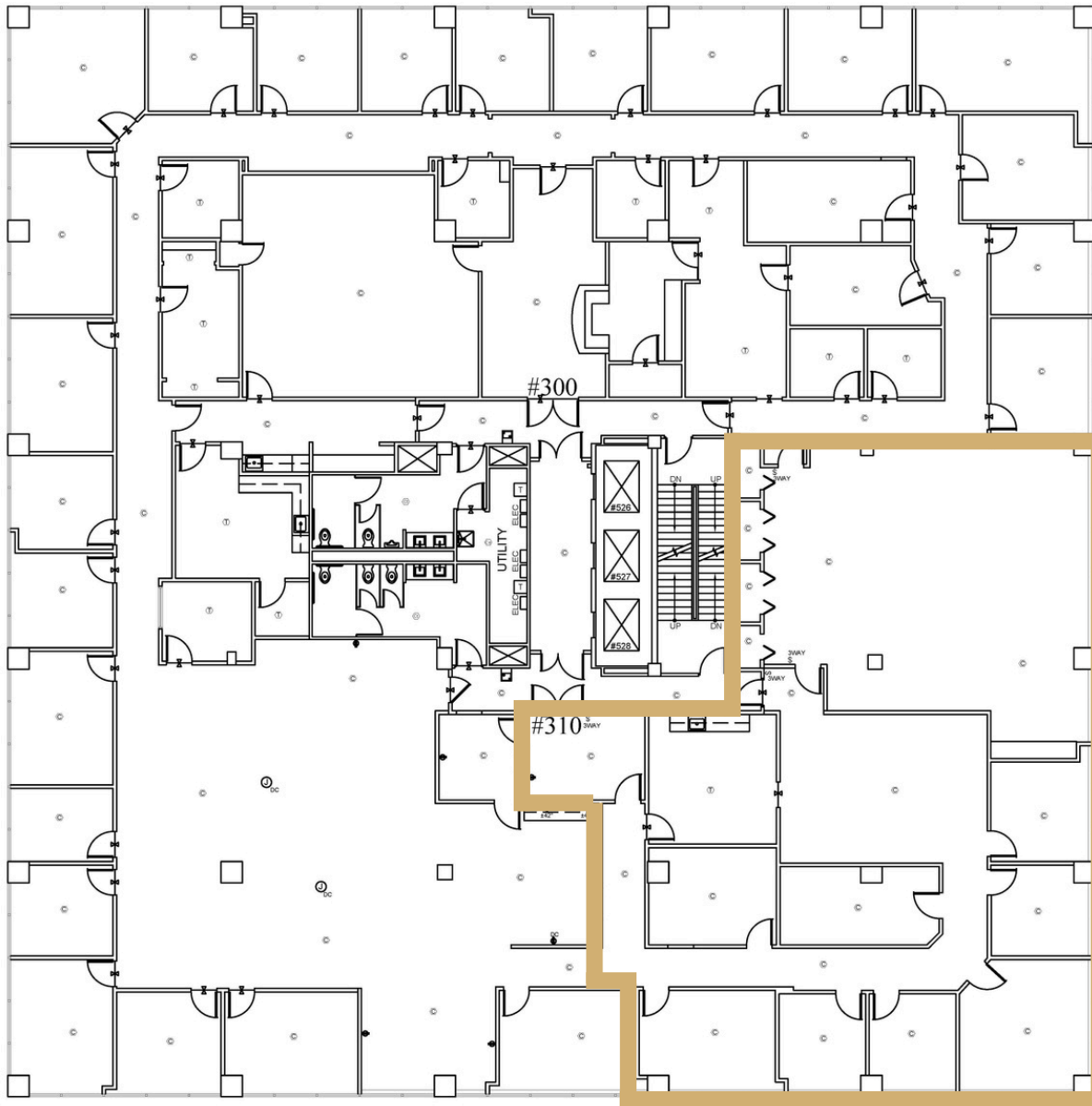
This information contained herein has been obtained from sources deemed to be reliable but is provided for demonstrative purposes only. This information is provided without any guarantee, its accuracy and reliability should be verified by interested parties, and it is subject to change without notice or obligation. Horrell Company assumes no responsibility for the accuracy or reliability of the information herein.



The Tower | 3rd Floor

Suite 310 | Office

Available: Now



Suite 310 | 4,536 \pm SF

This information contained herein has been obtained from sources deemed to be reliable but is provided for demonstrative purposes only. This information is provided without any guarantee, its accuracy and reliability should be verified by interested parties, and it is subject to change without notice or obligation. Horrell Company assumes no responsibility for the accuracy or reliability of the information herein.



The Tower | 4th Floor

Fully Leased | Office



This information contained herein has been obtained from sources deemed to be reliable but is provided for demonstrative purposes only. This information is provided without any guarantee, its accuracy and reliability should be verified by interested parties, and it is subject to change without notice or obligation. Horrell Company assumes no responsibility for the accuracy or reliability of the information herein.

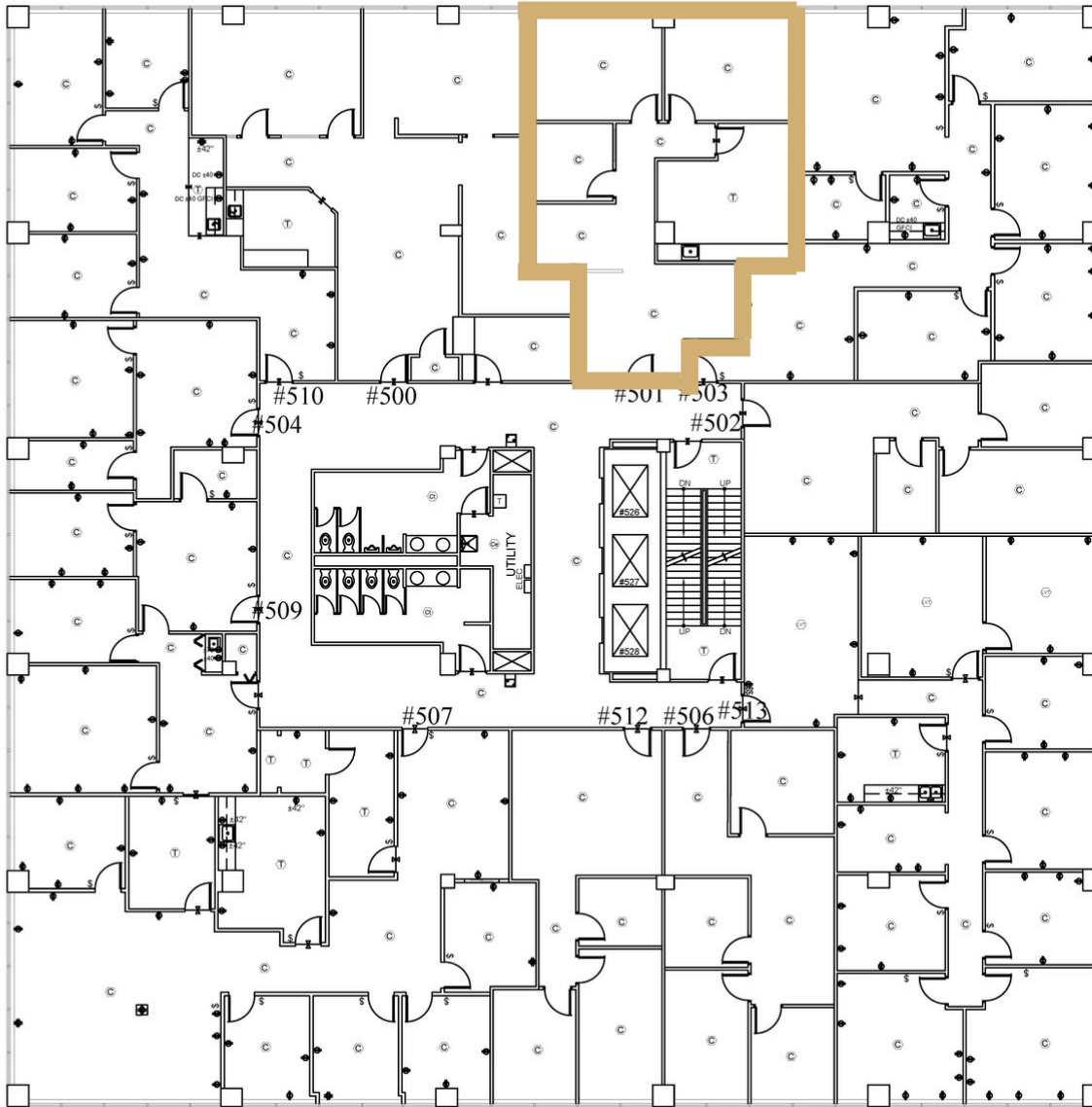


The Tower | 5th Floor

Suite 501 | Office

Suite 501 | 1,280± SF

Available: Now



This information contained herein has been obtained from sources deemed to be reliable but is provided for demonstrative purposes only. This information is provided without any guarantee, its accuracy and reliability should be verified by interested parties, and it is subject to change without notice or obligation. Horrell Company assumes no responsibility for the accuracy or reliability of the information herein.

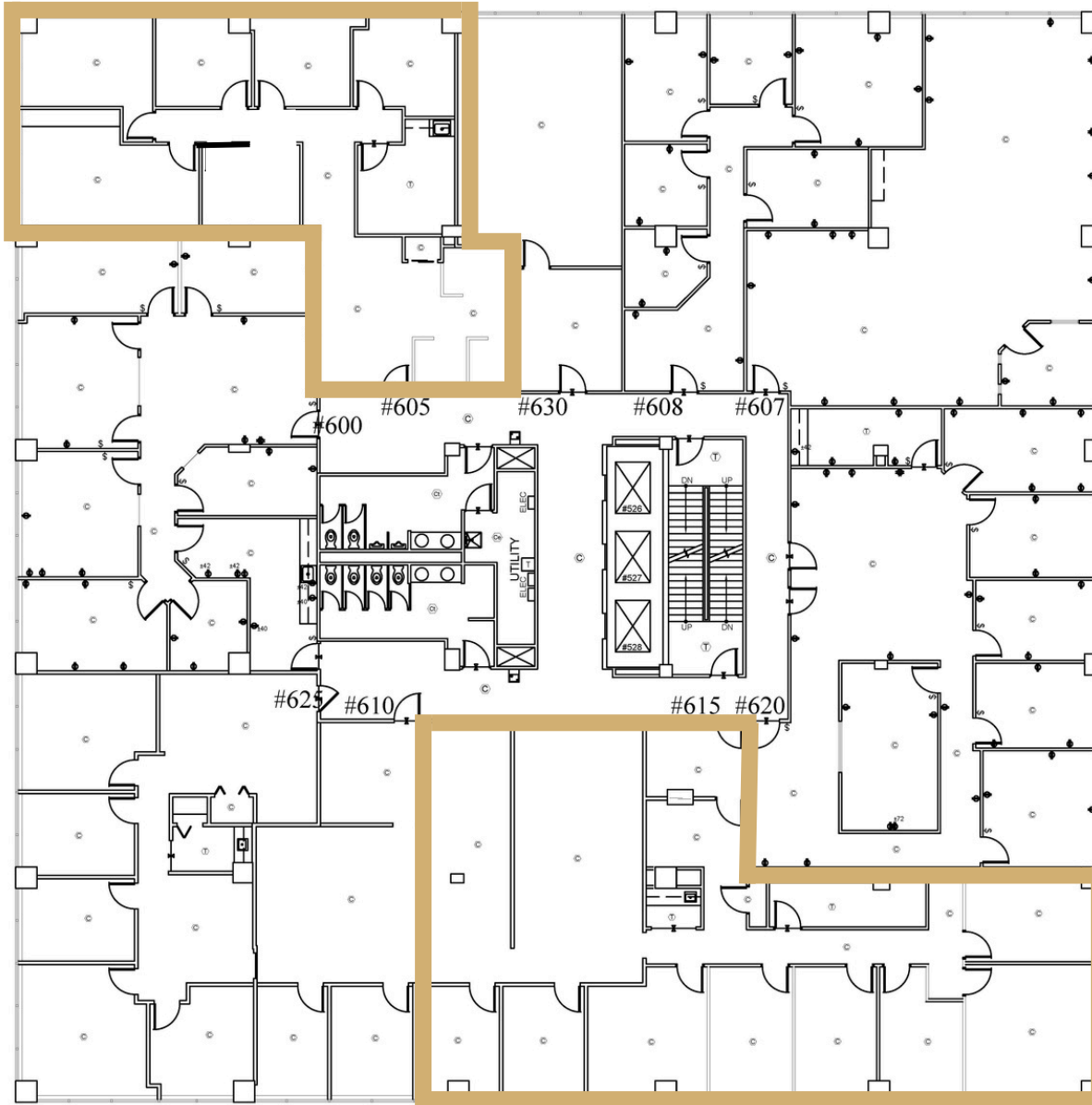


The Tower | 6th Floor

Suite 605 & 615 | Office

Suite 605 | 1,979 \pm SF

Available: Now



Suite 615 | 3,242 \pm SF

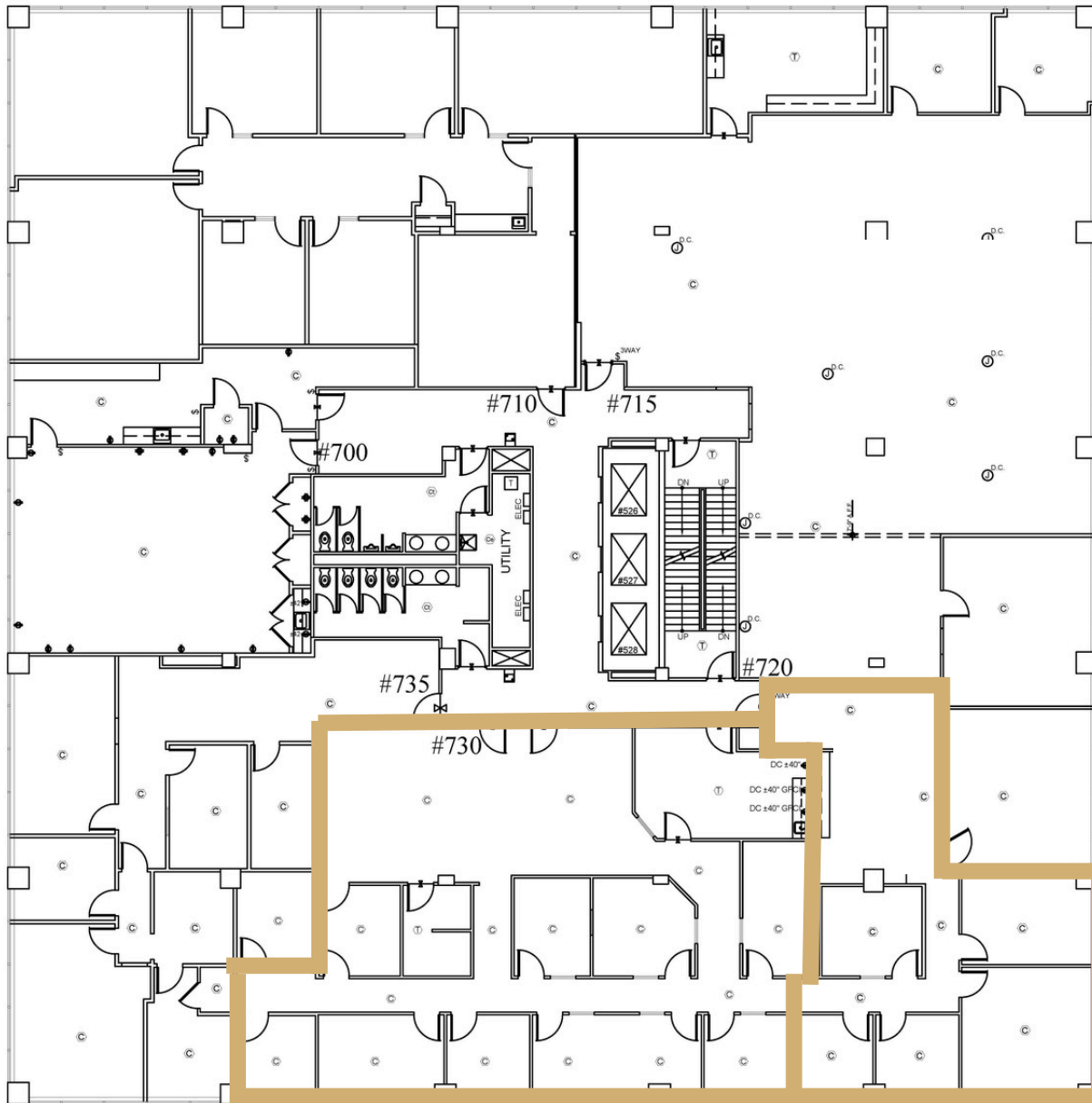
This information contained herein has been obtained from sources deemed to be reliable but is provided for demonstrative purposes only. This information is provided without any guarantee, its accuracy and reliability should be verified by interested parties, and it is subject to change without notice or obligation. Horrell Company assumes no responsibility for the accuracy or reliability of the information herein.



The Tower | 7th Floor

Suite 720 & 730 | Office

Available: Now



Suite 720 | 1,608 \pm SF

Suite 730 | 3,126 \pm SF

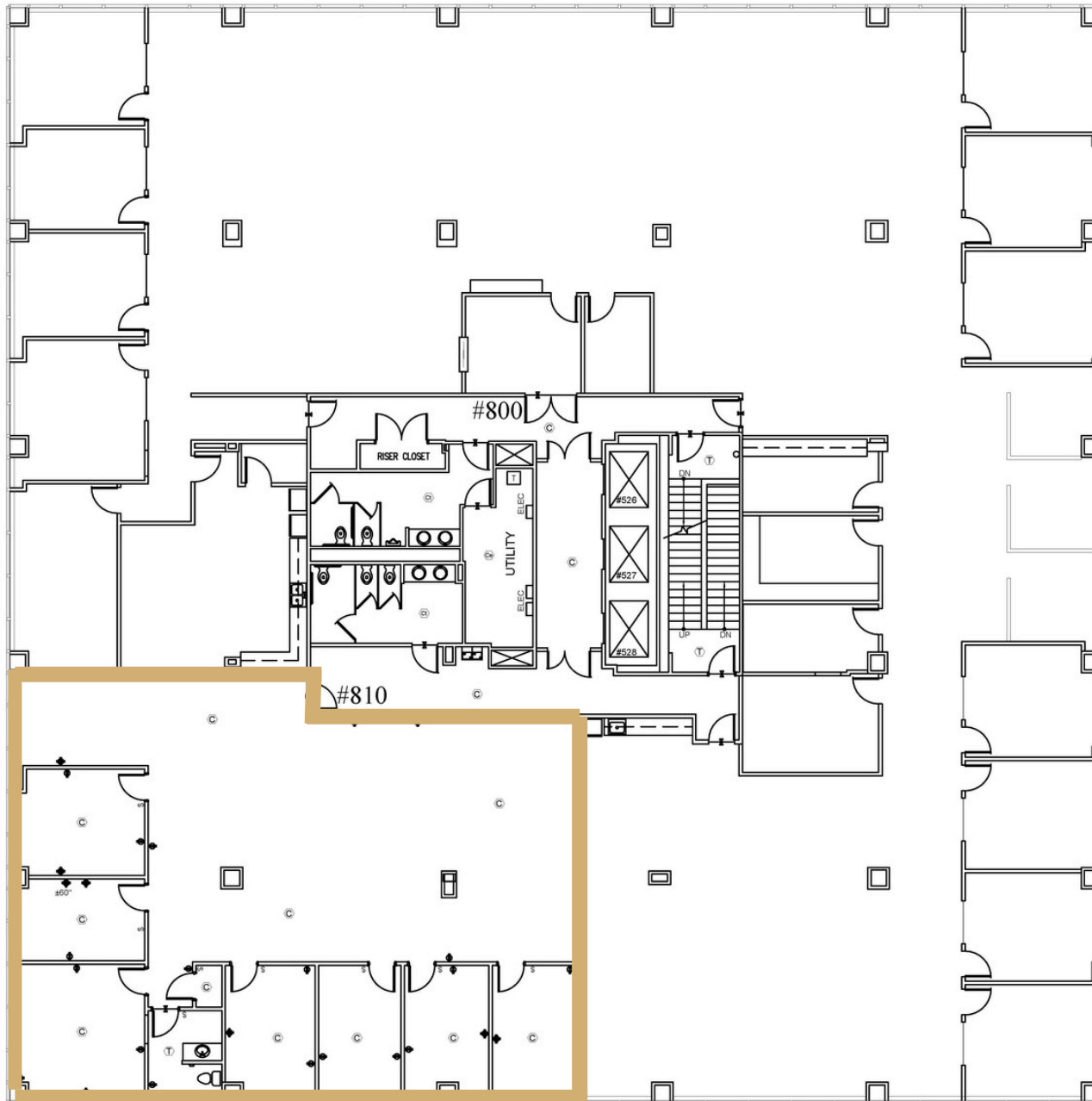
This information contained herein has been obtained from sources deemed to be reliable but is provided for demonstrative purposes only. This information is provided without any guarantee, its accuracy and reliability should be verified by interested parties, and it is subject to change without notice or obligation. Horrell Company assumes no responsibility for the accuracy or reliability of the information herein.



The Tower | 8th Floor

Suite 810 | Office

Available: Now



Suite 810 | 3,590 \pm SF

This information contained herein has been obtained from sources deemed to be reliable but is provided for demonstrative purposes only. This information is provided without any guarantee, its accuracy and reliability should be verified by interested parties, and it is subject to change without notice or obligation. Horrell Company assumes no responsibility for the accuracy or reliability of the information herein.





Contact Me

Laura Grider

M 615-604-7425

O 615-256-7114

lgrider@horrellcompany.com



3030 Sidco Drive

Nashville, TN 37204

www.horrellcompany.com