

# INDUSTRIAL SPACE FOR LEASE



**2832 LOGAN ST  
SUITE D**

## Suite Highlights

Total SF: 5,000± SF

Warehouse: 3,500± SF

Office: 1,500± SF

Restroom: 1

Dock Door: (1) 8' x 10'

Column Spacing: 23' x 25'

Clear Height: 16' - 18'

Lighting: Skylights

Electrical: 400 AMP / 3 Phase

Zoning: IWD

---

## Contact

**Ben McKnight**

615-300-7545

[bmcknight@horrellcompany.com](mailto:bmcknight@horrellcompany.com)

**Mike Russell, SIOR**

615-300-7114

[mrussell@horrellcompany.com](mailto:mrussell@horrellcompany.com)

---

615-256-7114

[www.horrellcompany.com](http://www.horrellcompany.com)

3030 Sidco Drive Nashville, TN 37204

**\$16.00 PSF | NNN**

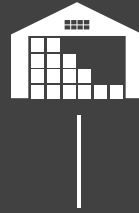
**\$3.41 PSF EST. OPEX**



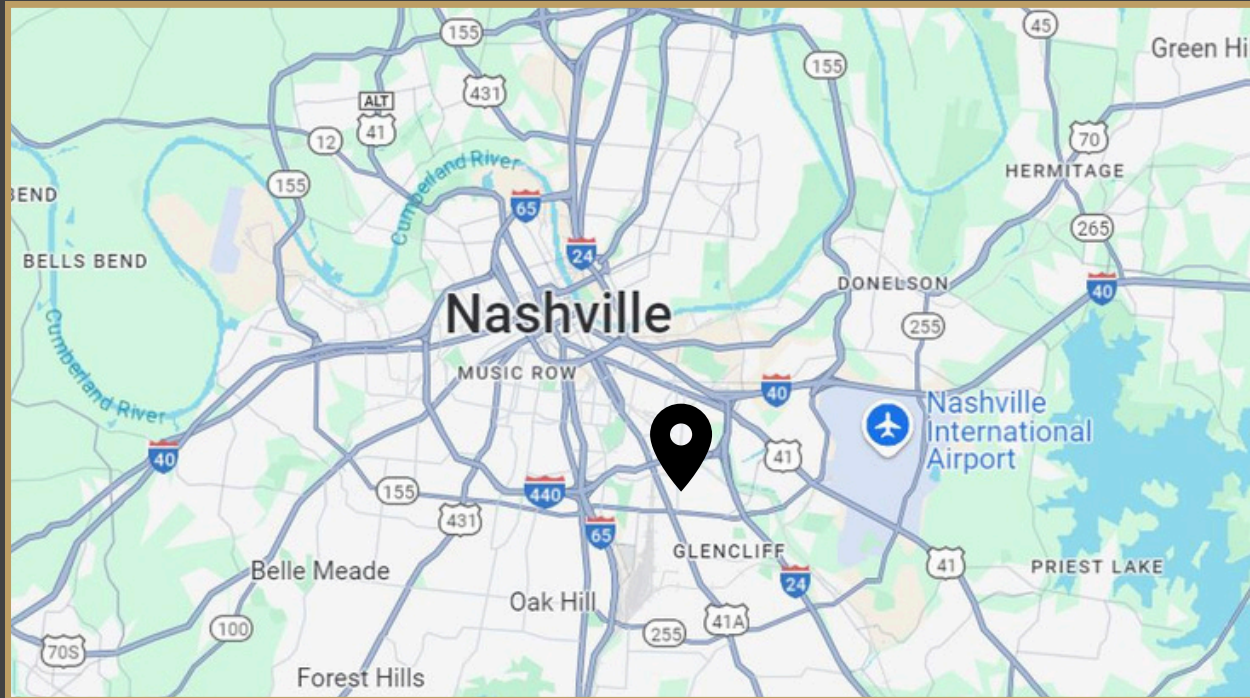
The information contained herein has been obtained from sources deemed to be reliable and we have no reason to doubt its accuracy or reliability; however, this information is provided without any guarantee, should be verified by interested parties, and is subject to change without notice or obligation. Horrell Company assumes no responsibility for the accuracy or reliability of the information herein.



# 2832 LOGAN ST SUITE D



## Floor Plan



## Map Overview

## Contact Us

Ben McKnight

615-300-7545

bmcknight@horrellcompany.com

Mike Russell, SIOR

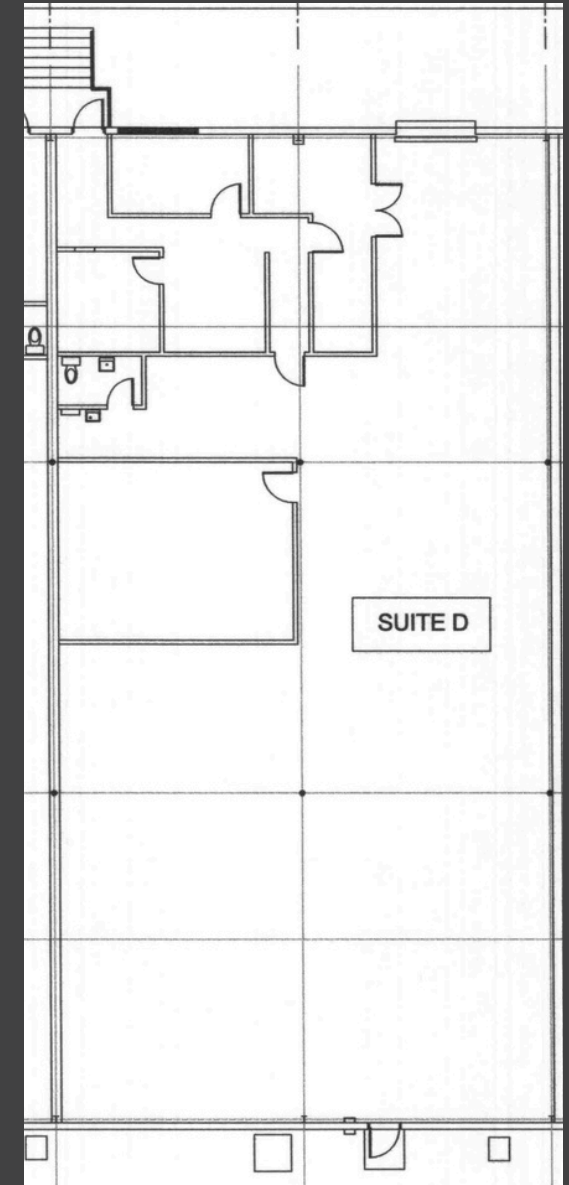
615-300-7114

mrussell@horrellcompany.com



615-256-7114

www.horrellcompany.com  
3030 Sidco Drive Nashville, TN  
37204



This information contained herein has been obtained from sources deemed to be reliable but is provided for demonstrative purposes only. This information is provided without any guarantee, its accuracy and reliability should be verified by interested parties, and it is subject to change without notice or obligation. Horrell Company assumes no responsibility for the accuracy or reliability of the information herein.