



**3061**  
1,500± SF

**3059**  
7,000± SF

**3053**  
9,300± SF

# FOR LEASE

Up To 16,300± SF Retail Space Available

**Ewing Shopping Center**  
**3053, 3059, 3061 Brick Church Pk.**  
**Nashville, TN 37027**

Exclusively Listed By



**Laura Grider**  
615-604-7425  
lgrider@horrellcompany.com

615-256-7114  
www.horrellcompany.com  
3030 Sidco Drive Nashville, TN 37204



The information contained herein has been obtained from sources deemed to be reliable and we have no reason to doubt its accuracy or reliability; however, this information is provided without any guarantee, should be verified by interested parties, and is subject to change without notice or obligation. Horrell Company assumes no responsibility for the accuracy or reliability of the information herein.

# Property Overview

ADDRESS 3053, 3059, 3061  
Brick Church Pike

SIZE 34,085± SF

PRICE \$15.00- \$16.00 PSF NNN

OPEX \$1.96 PSF

AVAILABLE 16,300± SF

- Ample Parking
- Close Proximity to I-24 & I-65



# Demographics

**2 MILES    5 MILES    10 MILES**



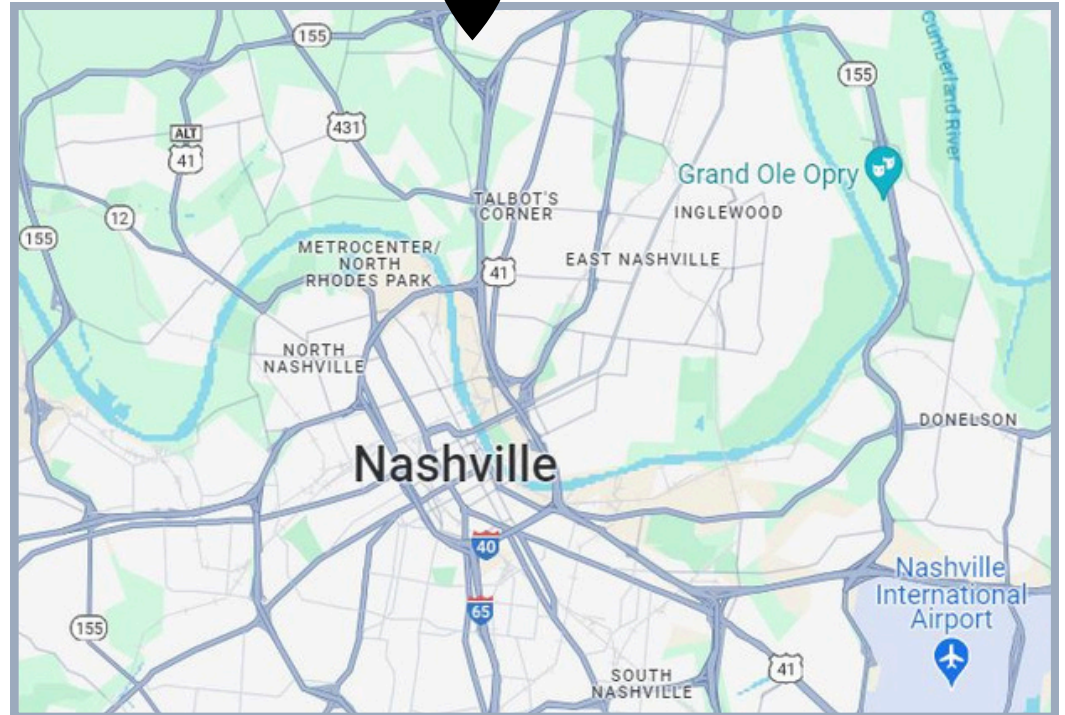
23,006    169,915    453,057



8,483    70,388    193,497



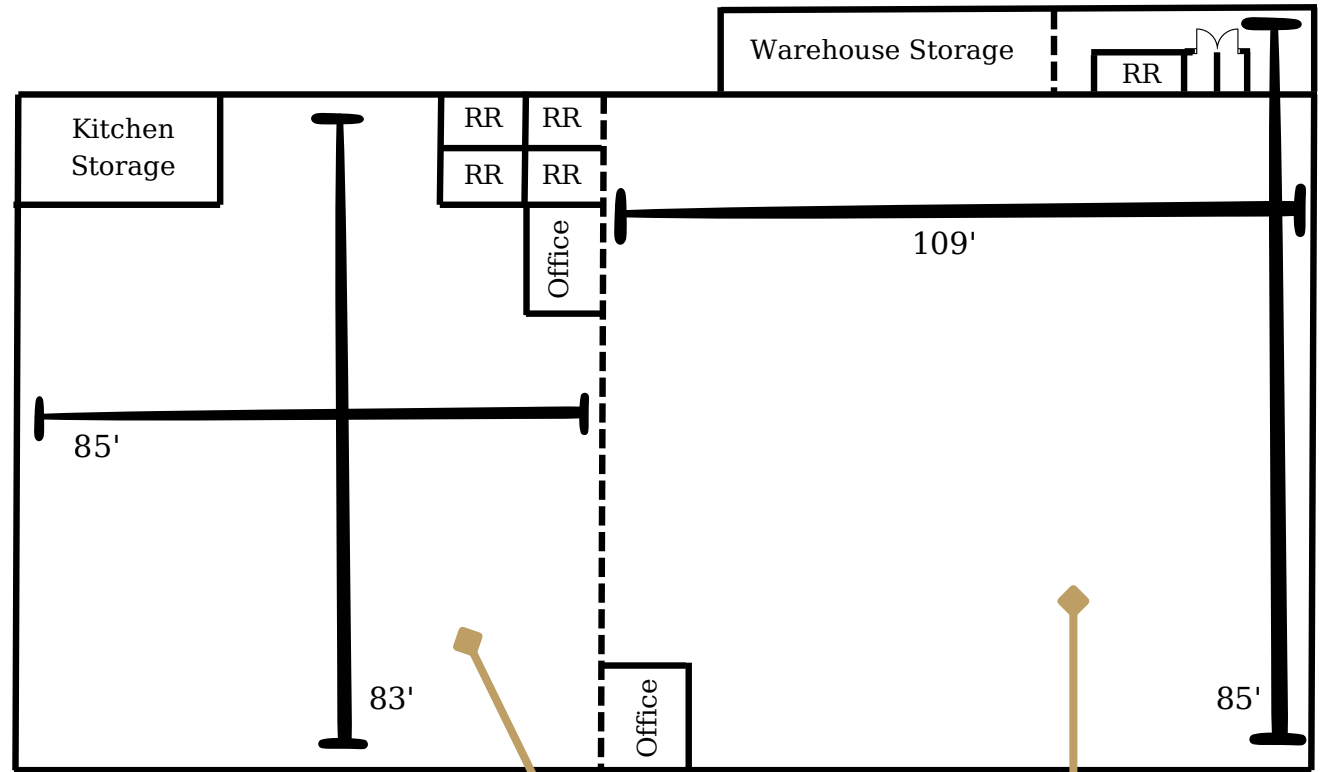
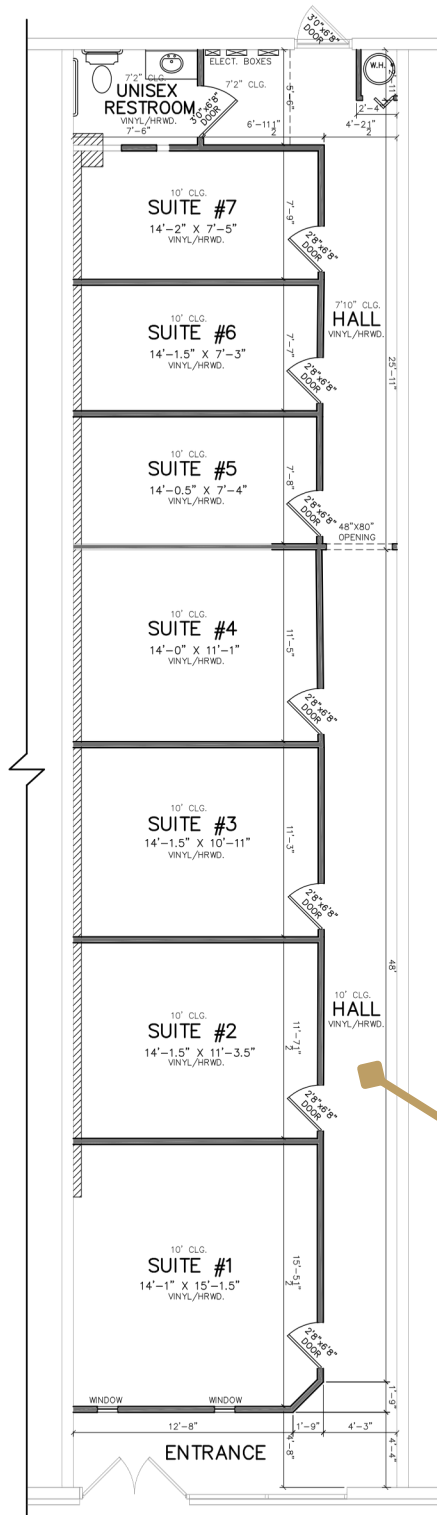
\$55,264    \$77,079    \$88,862



Floor Plan Not to Scale



# Floor Plans



**3061**  
1,500± SF

**3059**  
7,000± SF

**3053**  
9,300± SF



**3053 Brick Church Pike**

## **Space Highlights**

---

- 9,300± SF
- (2) Restrooms
- Double Door Loading
- LED Lighting Throughout
- (1) Small Office

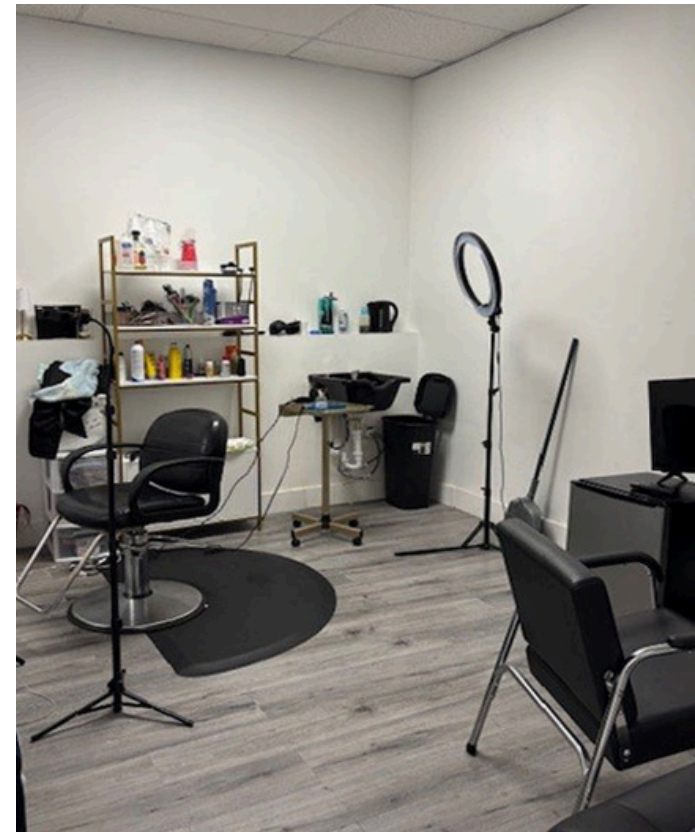
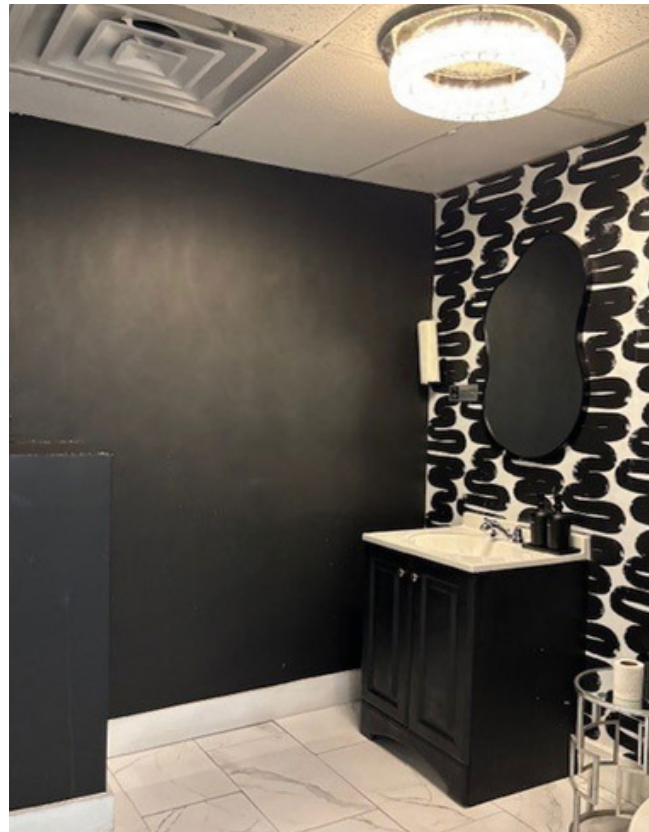




## 3061 Brick Church Pike

### Space Highlights

- 1,500± SF
- (1) Restroom
- LED Lighting Throughout
- Entrance/ Lobby



FOR LEASE

# Ewing Shopping Center

3053-3073 Brick Church Pike, Nashville, TN 37027

3073

2,556± SF



2,556± SF Retail/Flex  
Space Available

Exclusively Listed By



**Laura Grider**

615-604-7425

[lgrider@horrellcompany.com](mailto:lgrider@horrellcompany.com)



615-256-7114

[www.horrellcompany.com](http://www.horrellcompany.com)

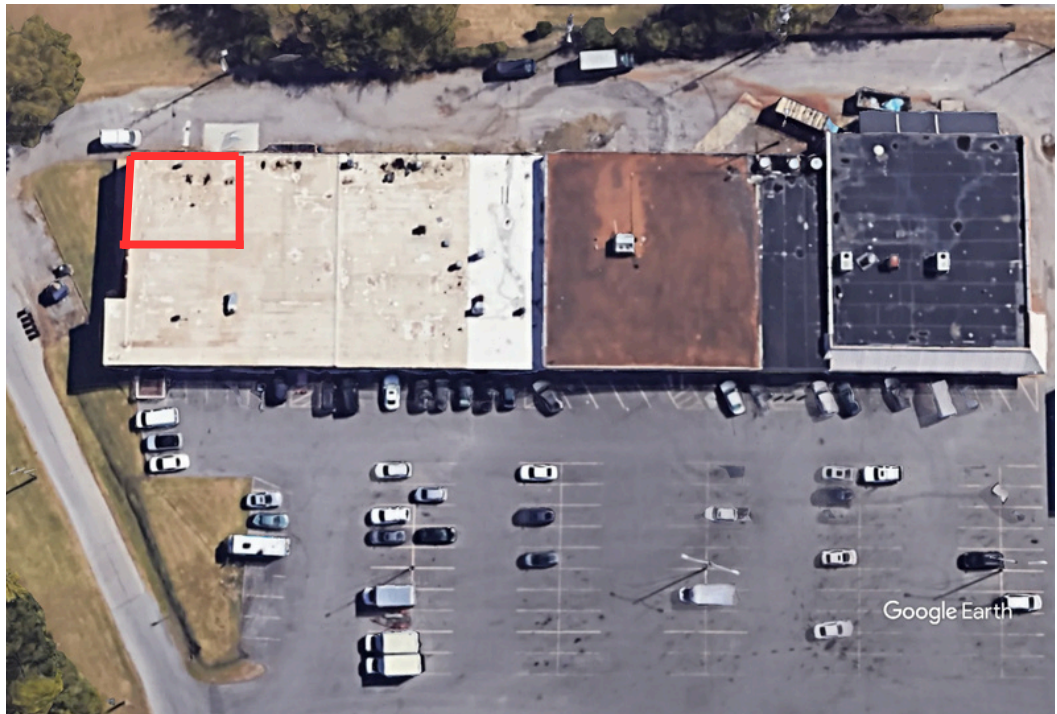
3030 Sidco Drive Nashville, TN  
37204

The information contained herein has been obtained from sources deemed to be reliable and we have no reason to doubt its accuracy or reliability; however, this information is provided without any guarantee, should be verified by interested parties, and is subject to change without notice or obligation. Horrell Company assumes no responsibility for the accuracy or reliability of the information herein.

# Property Overview

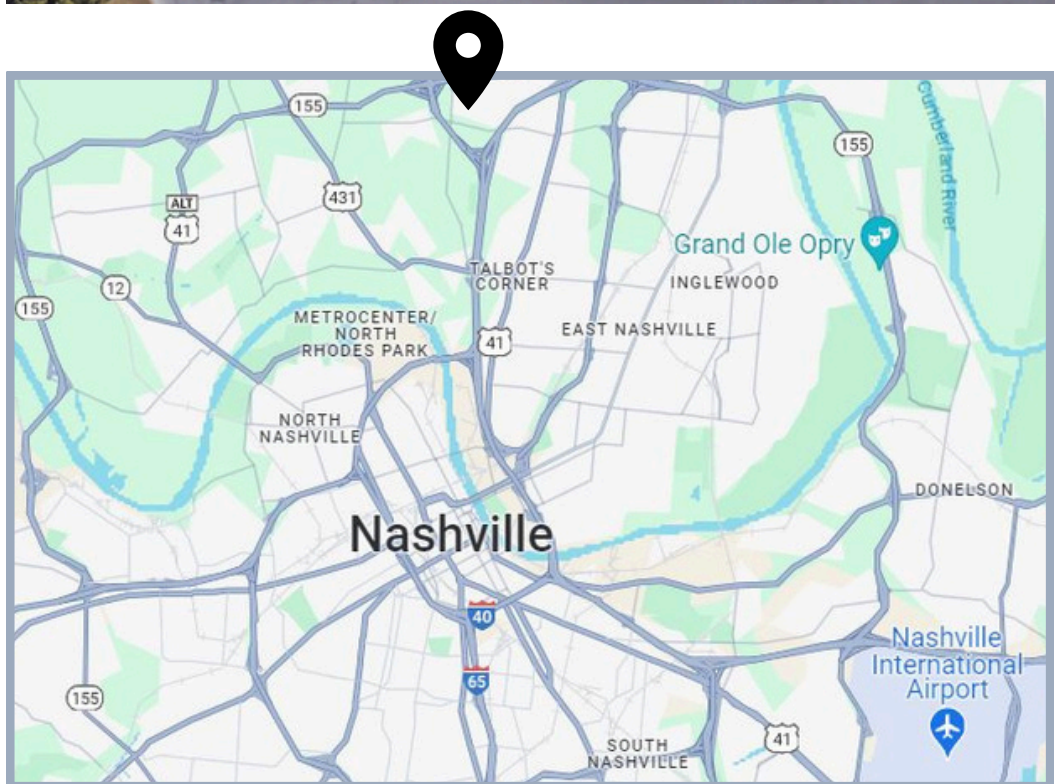
**ADDRESS** 3053-3073 Brick Church Pike Nashville, TN 37027  
**SIZE** 34,085± SF  
**PRICE** \$15.50 PSF NNN  
**OPEX** \$1.96 PSF  
**AVAILABLE** 2,556± SF  
**HIGHLIGHTS**

- Ample Parking
- Close Proximity to I-24 & I-65



# Demographics

	2 MILES	5 MILES	10 MILES
	23,006	169,915	453,057
	8,483	70,388	193,497
	\$55,264	\$77,079	\$88,862



# SUITE 3073 PHOTOS



- **(1) 8' x 10' Drive-In Door**
- **400± SF Office**
- **\$15.50 PSF**



# FLOOR PLAN

## SUITE 3073 2,556± SF



This information contained herein has been obtained from sources deemed to be reliable but is provided for demonstrative purposes only. This information is provided without any guarantee, its accuracy and reliability should be verified by interested parties, and it is subject to change without notice or obligation. Horrell Company assumes no responsibility for the accuracy or reliability of the information herein.



## Contact



**Laura Grider**

615-604-7425

[lgrider@horrellcompany.com](mailto:lgrider@horrellcompany.com)



615-256-7114

[www.horrellcompany.com](http://www.horrellcompany.com)

3030 Sidco Drive Nashville, TN

37204

